



TO: Mayor and Councilmembers

FROM: Vyto Adomaitis, Neighborhood Services & Public Safety Director
Charlie Ebeling, Public Works Director

CONTACT: Jaime A. Valdez, Sr. Project Manager
Marti Milan, Principal Civil Engineer

SUBJECT: Parking Restrictions in Old Town

RECOMMENDATION:

- A. Adopt Resolution No. 19-__ entitled, "A Resolution of the City Council of the City of Goleta, California, Establishing Parking Restrictions on Specified Streets and Street Segments in Old Town Goleta."
- B. If Council chooses Option 2, appropriate \$4,500 from General Fund Unassigned Fund Balance to account 101-5-5800-111, or
- C. If Council chooses Option 3, appropriate \$30,000 from General Fund Unassigned Fund Balance to account 101-5-5800-111, or
- D. If Council chooses Option 4, appropriate \$30,000 from General Fund Unassigned Fund Balance to account 101-5-5800-111.
- E. Introduce and conduct first reading (by title only), and waive further reading of Ordinance No. 19-__ entitled "An Ordinance of the City Of Goleta, California Amending Chapter 10.01 (Motor Vehicles And Traffic) of Title 10 (Vehicles And Traffic) of the Goleta Municipal Code to Require Vehicles Parked In Restricted Parking Areas to Not Re-Park Within A Distance Of 300 Feet."

BACKGROUND:

It has long been a goal of the City to increase the amount of public parking in Old Town for use by visitors. Recent efforts have focused on increasing *off-street* parking to add parking inventory to Old Town. These work efforts are described below.

Off-Street Parking

In July of 2016, the City entered into a shared parking agreement with Community West Bancshares ("CWB") to lease 18 parking spaces ("CWB Parking Spaces") at 5801 and

5827 Hollister Avenue (APN 071-114-002 and 071-114-016, respectively) in Old Town via Agreement No. 2016-142.

In October of 2017, the City closed escrow on a parcel located on the western side of Orange Avenue north of Hollister Avenue (“Hollister”), identified as Assessor’s Parcel Number 071-051-011 for future public *off-street* parking (“Orange Ave Lot”). Staff estimates approximately 17 *off-street* parking spaces will be available for the public once the lot is repaved and operational. Budget is being determined for the acquisition of the ingress/egress easements and repaving of the Orange Ave Lot, which is scheduled for completion by fiscal year 2019/2020.

City Staff met with the Public Safety and Emergency Preparedness Standing Committee (“Committee”) on November 27, 2017 to discuss potential time limits for the CWB Parking Spaces. Staff initially proposed instituting a two-hour parking limit for the CWB Parking Spaces based on CWB’s preference. After discussion and input from the public, the Committee instead recommended instituting a 90-minute parking limit for the leased parking spaces at the CWB lot as well as the future parking spaces at the City-owned Orange Ave Lot (APN 071-051-01).

On December 5, 2017, the City Council established hours of enforcement for the CWB Spaces and for the City-Owned Lot on Orange Avenue via Resolution No. 17-51. Council agreed that a general 90-minute time limit for the City-controlled *off-street* parking spaces was suitable for the needs of most visitors to Old Town. Highlights of Resolution No. 17-51 include:

- The hours of enforcement for the City-controlled *off-street* parking spaces shall be in effect from 7:00 a.m. to 7:00 p.m. every day, except Sunday.
 - Enforcement of these parking restrictions shall not be in effect on City recognized holidays.
 - There shall be a maximum time limit of ninety minutes for City-controlled *off-street* parking spaces, based on unmet parking demand in the area and the average duration needed to serve patrons of the adjacent businesses and to assure turnover of spaces.
 - Any vehicle violating these hours of availability is subject to a citation and or tow as set forth in the California Vehicle Code.
- Parking is prohibited in the City-controlled *off-street* parking spaces between the hours of 10:00 p.m. to 6:00 a.m. the following day.
 - Any vehicle violating these hours of prohibited parking is subject to a citation and or tow as set forth in the California Vehicle Code.
 - Prohibited parking shall be in effect on all days including City recognized holidays.

At that same City Council meeting, there was also a willingness to eventually apply the same 90-minute time limit to *on-street* parking for certain areas of Old Town. The Council directed staff to work with the Committee on possible options and locations to institute 90-minute parking time zones in Old Town. The City has in place a Santa Barbara County contract Parking Enforcement Officer (PEO) to enforce these parking regulations

DISCUSSION:

On-Street Parking

This staff report seeks to ensure parking availability and turnover of parking spaces using timed parking for *on-street* spaces. On March 12, 2018, the Committee convened at the Goleta Valley Community Center for an evening meeting to discuss potential timed parking restrictions in Old Town. Widespread public outreach through the City's website, emails to interested parties from GovDelivery (City website interface), flyers to Old Town businesses, and the Monarch Press (including a survey). Staff presented preliminary results from the Old Town Parking Survey (Survey), which included responses from 126 participants (not all responded to every question). Feedback from the approximately 10 members of the public focused on the following:

- Length of Timed Parking—Two-hour parking was initially favored, but there was eventual consensus on 90 minutes given the existing time restrictions in City-controlled *off-street* parking lots in Old Town. Consistency of time restrictions was collectively a desired feature of any timed parking restrictions in order to avoid confusing visitors parking in Old Town.
- Impacts to Residential Parking—There were concerns expressed about the displacement of residential parking north of Hollister if timed parking occurred along Hollister. If timed parking was extended north of Hollister, there was concern of even more displacement of residential parking. This brought up the idea of residential permit parking if substantial negative impacts to the residential area occurred.
- Employee Parking—This topic did not have a clear majority in terms of opinion. There was an understanding of the importance of the matter, but there was no unanimous approach to dealing with the concern of employees parking *on-street* and having to move their vehicles regularly to avoid citations. Some preferred to have timed *on-street* parking only on Hollister and perhaps one block south, and to leave *on-street* parking further south without time restrictions. Others brought up the need for an employee parking lot where employers/employees pay for access.
- Additional Options—A handful of participants brought up the notion of metered parking and in general the need for more *off-street* parking. The idea would be to have spaces where users could choose to pay to park for longer periods of time (more than 90 minutes) rather than receive a citation.

On June 6, 2018, the Committee met to go over the final Survey results in the context of potential parking restrictions. The final results from the Survey (included with this report as Attachment 1), which included responses from 218 participants (not all responded to every question) provided the following valuable insight:

- About 30% of respondents report regularly parking in private lots (Q1)
- Average length of stay in the area when parking on or within one block of Hollister (Q2)
 - About 85% of respondents report up to two hours
 - About 15% of respondents report two hours or more
 - About half of these respondents (7.8% of all respondents) report two to eight hours
 - About half of these respondents (7.4% of all respondents) report more than eight hours
- About 62% of respondents report a negative/somewhat negative perception of parking near Hollister in Old Town (Q3)
- About 34% of respondents report spending two minutes or less looking for parking on or within one block of Hollister (Q4)
- About 62% of respondents report 90 minutes or less as their preferred amount of time for free *on-street* parking along Hollister and adjacent streets in Old Town (Q7)

On September 5, 2018, the Committee again reviewed the survey results in Attachment 1, the status quo conditions in Old Town, safety enhancement for site distances and clearances, as well as four other options with differing portions of streets included in the restrictions. Committee members again recommended 90 minutes as the timed parking restriction for select portions of streets in Old Town. During the meeting, Committee members selected their recommended option, Option 3 in the ensuing table, for Staff to bring back to City Council.

Potential Options

Options 1-4 are described below and are shown in Attachment 3, Old Town Parking Maps

| OPTIONS | DESCRIPTION | Parking Spaces Lost |
|----------|--|---------------------|
| Option 1 | Status Quo—Leave existing restrictions and markings unchanged. | 0 |
| Option 2 | Option 1 + Safety enhancements (site distances clearances) | 31 |

| | | |
|----------|--|----|
| Option 3 | Portions of the Safety Enhancements + 90 and 15-minute timed parking along Hollister Ave between Fairview Ave and S. Kellogg Ave. 90-minute parking on portions of Orange Ave, Magnolia Ave, Nectarine Ave, Tecolote Ave, and Kinman Ave north of Hollister Ave. 90-minute parking on portions of Orange Ave, Magnolia Ave, Pine Ave, and Rutherford St south of Hollister Ave and one loading zone on Orange Ave. | 26 |
| Option 4 | Option 2 + 90-minute parking on portions of Orange Ave, Magnolia Ave, Nectarine Ave, Tecolote Ave, and Kinman Ave north of Hollister Ave. 90-minute parking on portions of Orange Ave, Magnolia Ave, Pine Ave, and Rutherford St south of Hollister Ave and one loading zone on Orange Ave. | 32 |

Option 1 would leave Hollister Avenue and the adjacent cross streets without any changes and would have no new costs associated with that option, if selected.

Option 2 includes parking restriction for safety enhancements only. Public Works recommends that all of the parking restrictions for safety enhancement be implemented. This would reduce parking by 31 spaces.

Option 3 provides for some of the safety enhancements related to site distances clearances at intersections and driveways along Hollister Ave for the Old Town corridor. Option 3 also places parking restrictions on the portions of streets *north* of Hollister Ave (from Orange Ave to Kinman Ave) such that they would apply to portions of the streets that were not in front of primarily residential uses. Option 3 also places parking restrictions on the portions of streets *south* of Hollister Ave (from Orange Ave to Rutherford St). Even with these proposed 90-minute parking there would remain a supply of non-timed parking north and south of Hollister Ave. This would reduce parking by 26 spaces.

Option 4 provides for all safety enhancements and includes the recommended 90-minute parking on the streets north and south of Hollister Ave as recommended by the Committee. Public Works supports the 90-minute parking in all locations. Time limits on parking has no effect on safety. Any location currently shown with the 1-hour parking or unrestricted parking could be changed to 90-min parking by the installation or replacement of parking signs. This would reduce parking by 32 spaces.

After the review of the parking restrictions by the Committee, there was one request from a local business owner for two, 15-minute, parking spaces on Magnolia Avenue. The business owner requested that one be in front of that business and the other one on the opposite side of the street. This request is included as Attachment 5. Since this was not considered by the Committee it was not included in the tables but could easily be included at the Council's discretion. All of these options will provide for design immunity since the improvements are being authorized by City Council.

Public Works recommends Option 4. This option is the Committee's recommendation minus 6 additional parking spaces on Hollister Ave that did not include the safety enhancements for line of sight needs. Although Public Works is sensitive to the need for parking in Old Town, it is also important to support safety in such a busy area like Old Town.

Lastly, Staff recommends adoption of an amendment to Goleta Municipal Code Chapter 10.01 (Attachment 6) requiring vehicles parked in areas with restricted parking to not "re-park" within 300 feet of the place initially parked within a period of four hours. The proposed ordinance seeks to increase parking availability by prohibiting drivers from re-parking their vehicles in the same general space or immediately nearby. For reference, most block faces on Hollister Avenue where cars can park are less than 300 feet requiring a driver to move their vehicle to another block.

Actual Sign Language for Resolution Purposes

Staff recommends the following enforcement language for the parking signs (consistent with Resolution No. 17-51 with the City-controlled *off-street* parking spaces) and that they include directional arrows as shown in the ensuing image:

90-Minute Parking 7am-7pm, except Sundays and holidays.



FISCAL IMPACTS:

The actual fiscal impacts will ultimately depend on the size and orientation of restricted parking areas. On-going maintenance would be negligible as parking between signs would not need painting. If Option 1 is selected there would be no costs since there would be no changes to the existing parking restrictions and all would remain as is. Based on previous experience, the total cost for installation of a post with signage for parking would be about \$250 each.

The following table provides the estimated costs associated with installing new parking restriction signs based on Options 2, 3, and 4:

| Locations | Option 2 Existing Strips (1-Hour Parking) | Option 3 & 4 Estimated Strips, 90-min |
|---|---|--|
| Hollister northside, between S. Fairview Avenue and S. Kellogg Avenue | 3 | 10 |
| Hollister southside, between S. Fairview Avenue and S. Kellogg Avenue | 4 | 7 |
| 1 st block north of Hollister | | 12 |
| 1 st block south of Hollister | | 28 |
| Loading Zone | | 1 |
| Total | 7 | 58 |
| Total number of posts | 14 | 116 |
| Estimated costs (@\$250 per post) | | |
| <i>*NOTE: Total number of strips will depend on the Option selected. One strip would require two posts and signs.</i> | | |

If Options 2, 3, or 4 is chosen an additional appropriation will be needed. It is recommended that an additional \$1,000 be added to the estimates shown in the above table to be able to cover any unforeseen field conditions. Public Works recommends an additional appropriation of \$30,000 from the General Fund's Unassigned Fund Balance. The table below summarizes the current budget and recommended appropriation if Option 3 were chosen:

| Old Town Timed Parking Restrictions, FY 18/19 | | | | | |
|---|--------------|-------------------------------|------------------------------|------------------------------|------------------------------|
| Account | Fund Type | FY 18/19 Current Budget | YTD Actuals + Encumbrance | Recommended Appropriation | Total Available Budget |
| 101-5-5800-111 | General Fund | \$35,000 | \$34,781 | \$30,000 | \$30,219 |
| 201-5-5800-111 | Gas Tax | \$20,000 | \$19,900 | \$0 | \$100 |
| Total | | \$55,000 | \$54,681 | \$30,000 | \$30,319 |

There is approximately \$3.5 million available in General Fund Unassigned Fund Balance.

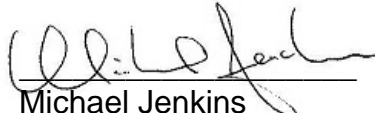
ALTERNATIVES:


Although the committee reviewed 6 different options the committee and staff were in concurrence that not all of the options should be shown at this time. City Council could elect not to pursue changes to the existing parking restrictions, they could elect to only pursue changes limited to safety enhancements to intersections and driveways for improved site distance clearances, they could implement Option 3 as recommended by the Committee, they could implement Option 4 as recommended by Public works, or

they may direct staff to consider other alternatives by meeting again with the Committee to develop different approach(es) or plan(s) for the parking in Old Town.

Legal Review By:

Approved By:


Michael Jenkins
City Attorney


Michelle Greene
City Manager

ATTACHMENTS:

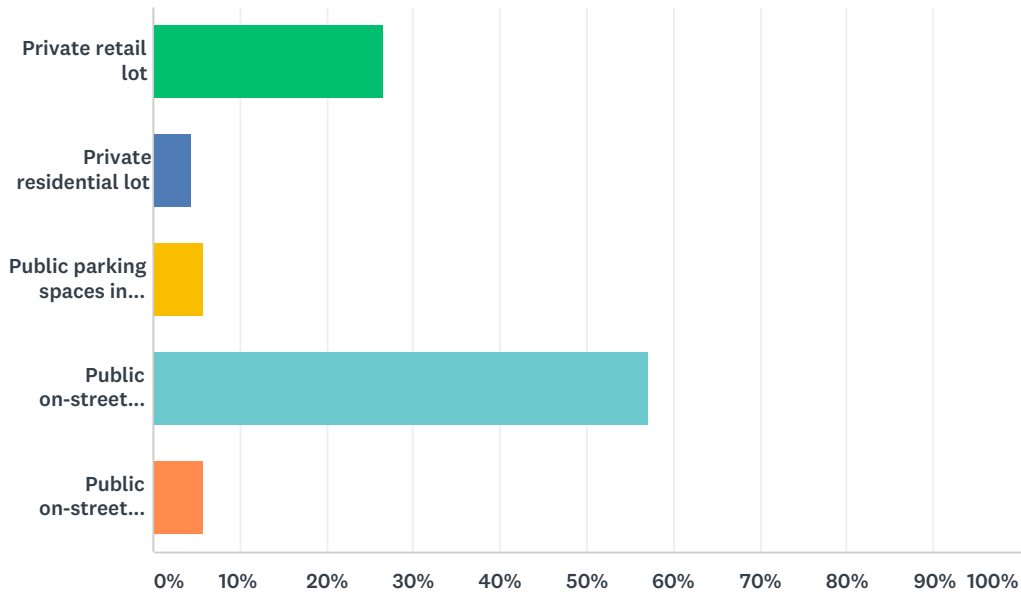
1. Old Town Parking Survey Report - Online Survey Monkey conducted in February and March of 2018.
2. Old Town Parking Stats – Excel Spreadsheet
3. Old Town Parking Maps – Options 1-4
4. Resolution No. 19-__ entitled, “A Resolution of the City Council of the City of Goleta, California, Establishing Parking Restrictions for No Parking, 15 Minute Parking, 90 Minute Parking, and a Loading Zone in Old Town Goleta.”
5. Business Owner Request for Two, 15-Minute Parking Spaces for Magnolia Avenue
6. Ordinance No. 19-__ entitled “An Ordinance of the City of Goleta, California Amending Chapter 10.01 (Motor Vehicles and Traffic) of the Goleta Municipal Code to Require Vehicles Parked in Restricted Parking Areas to not Re-Park within a Distance of 300 Feet.”

Attachment 1

Old Town Parking Survey Report—
Online Survey Monkey conducted in February and March of 2018

Q1 Which of these best describes where you park in Old Town?

Answered: 203 Skipped: 15



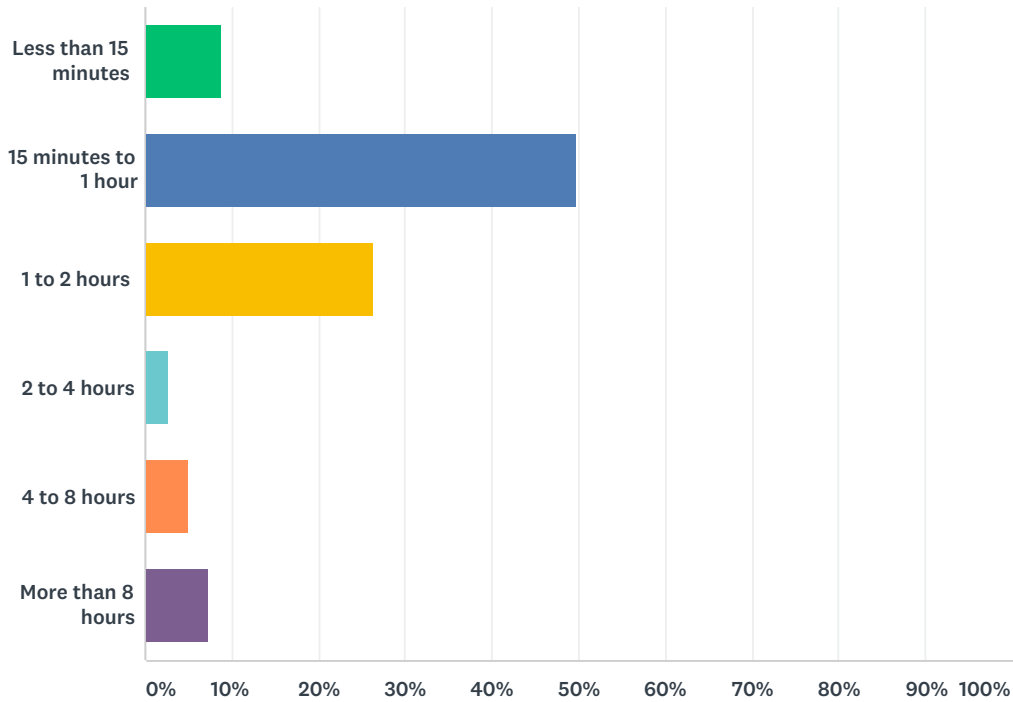
| ANSWER CHOICES | RESPONSES |
|--|------------|
| Private retail lot | 26.60% 54 |
| Private residential lot | 4.43% 9 |
| Public parking spaces in Community West Bank lot | 5.91% 12 |
| Public on-street parking within one block of Hollister Avenue | 57.14% 116 |
| Public on-street parking more than one block from Hollister Avenue | 5.91% 12 |
| TOTAL | 203 |

| # | OTHER (PLEASE SPECIFY) | DATE |
|----|---|--------------------|
| 1 | Free street parking with handicap unloading. | 3/26/2018 8:09 AM |
| 2 | I have difficulty parking in the area, because I need handicap parking. | 3/25/2018 10:26 PM |
| 3 | The private lot is often full with the public parking there so I sometimes park on the street | 3/21/2018 12:20 PM |
| 4 | We own a home in the back of old town, and the parking had gotten so out of hand. People park illegally and nothing is ever done. How about start painting red curves where red curves need to be. For example in front of each fire hydrant. | 3/21/2018 2:01 AM |
| 5 | Private residential, private commercial, public on street within 1 block of Hollister | 3/20/2018 8:50 PM |
| 6 | Wherever I can find a place to park | 3/19/2018 2:20 PM |
| 7 | On Hollister | 3/16/2018 4:51 PM |
| 8 | On Hollister or Santa Cruz Market lot. | 3/14/2018 8:53 PM |
| 9 | I park in a combination of the above. | 3/14/2018 4:06 AM |
| 10 | Private office lot | 3/13/2018 11:55 AM |
| 11 | I park lots of places, but you only let me select one option????? | 3/13/2018 10:22 AM |
| 12 | Park on Hollister Ave | 3/12/2018 10:35 PM |

| | | |
|----|---|--------------------|
| 13 | Usually I do not find acceptable parking And just skip it. | 3/12/2018 10:08 PM |
| 14 | Wherever I can find a spot! Depending on what business I'm visiting. | 3/12/2018 5:40 PM |
| 15 | on Hollister | 3/9/2018 1:42 PM |
| 16 | Streets on Mandarin Dr. | 3/7/2018 5:12 PM |
| 17 | If retailer has no parking like the dive shop I park on street. | 3/7/2018 12:19 PM |
| 18 | On Hollister | 3/5/2018 11:48 PM |
| 19 | on hollister | 2/22/2018 6:02 PM |
| 20 | I avoid Old Town businesses as the parking is very difficult and the homeless people are now invading that area. | 2/22/2018 8:34 AM |
| 21 | Trying to desperately find a place to park on the street where friends live in OldTown! | 2/21/2018 4:02 PM |
| 22 | Wherever I can find spot either street or retail lot also residential lot | 2/21/2018 3:19 PM |
| 23 | On Hollister | 2/21/2018 2:03 PM |
| 24 | I would prefer to bike if it wasn't so dangerous. | 2/21/2018 1:33 PM |
| 25 | Street parking on Hollister | 2/21/2018 1:29 PM |
| 26 | I cannot select more than one? Private retail lot and public parking on Hollister Ave. and within one block of Hollister Ave. | 2/21/2018 1:21 PM |
| 27 | I usually lock my bicycle to a sign-post | 2/21/2018 1:06 PM |
| 28 | Also in private retail lot. | 2/20/2018 2:31 PM |

Q2 What is your average length of stay in the area when parking on or within one block of Hollister Avenue?

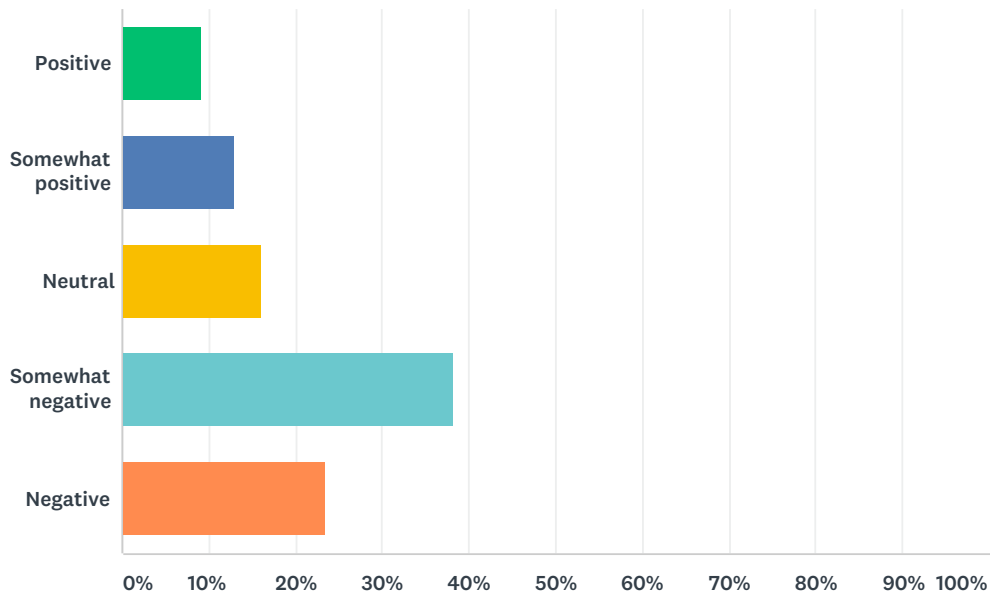
Answered: 217 Skipped: 1



| ANSWER CHOICES | RESPONSES | |
|----------------------|-----------|------------|
| Less than 15 minutes | 8.76% | 19 |
| 15 minutes to 1 hour | 49.77% | 108 |
| 1 to 2 hours | 26.27% | 57 |
| 2 to 4 hours | 2.76% | 6 |
| 4 to 8 hours | 5.07% | 11 |
| More than 8 hours | 7.37% | 16 |
| TOTAL | | 217 |

Q3 What is your overall perception of parking near Hollister Avenue in Old Town ?

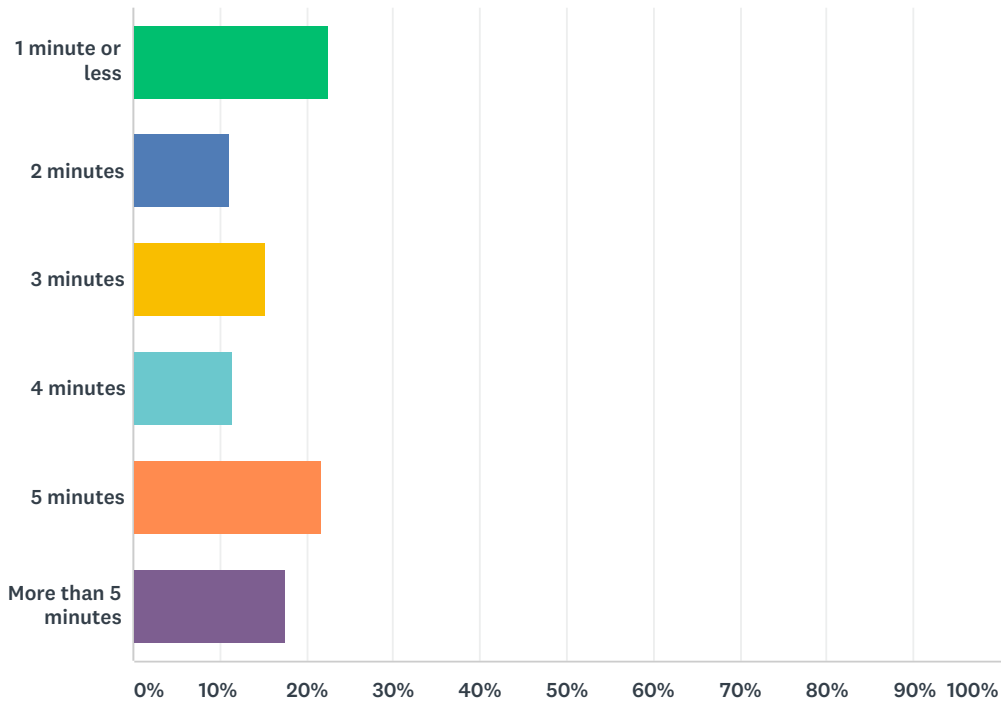
Answered: 217 Skipped: 1



| ANSWER CHOICES | RESPONSES | |
|-------------------|-----------|-----|
| Positive | 9.22% | 20 |
| Somewhat positive | 12.90% | 28 |
| Neutral | 16.13% | 35 |
| Somewhat negative | 38.25% | 83 |
| Negative | 23.50% | 51 |
| TOTAL | | 217 |

Q4 On average, how much time do you spend looking for a parking space along Hollister Avenue, or within one block of Hollister Avenue, for either on-street parking or in a parking lot?

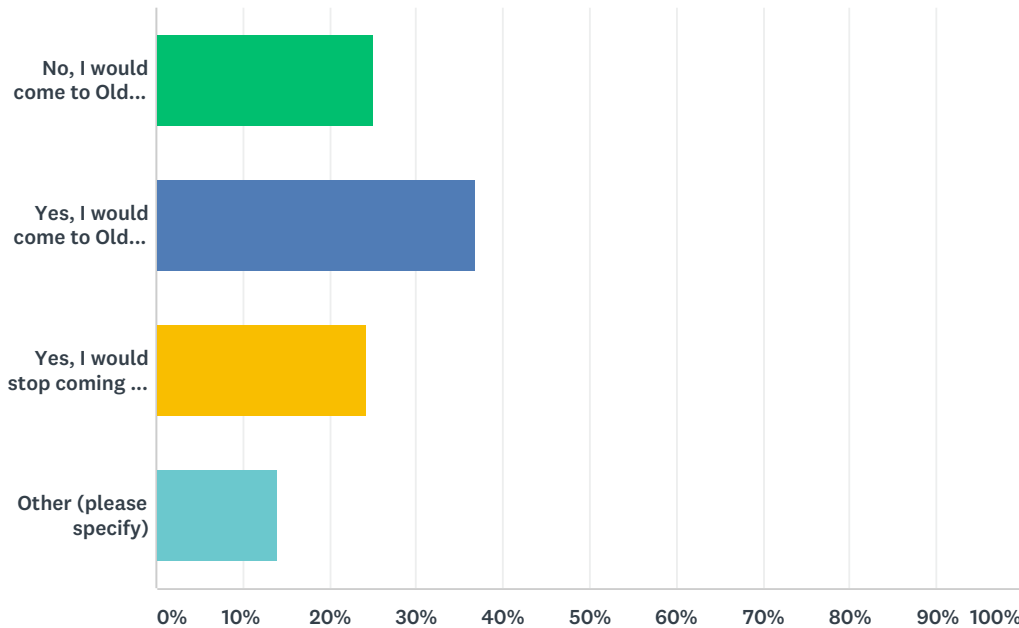
Answered: 216 Skipped: 2



| ANSWER CHOICES | RESPONSES | |
|---------------------|-----------|------------|
| 1 minute or less | 22.69% | 49 |
| 2 minutes | 11.11% | 24 |
| 3 minutes | 15.28% | 33 |
| 4 minutes | 11.57% | 25 |
| 5 minutes | 21.76% | 47 |
| More than 5 minutes | 17.59% | 38 |
| TOTAL | | 216 |

Q5 Would your behavior change if there were a fee for on-street parking on Hollister Avenue or in parking lots close to Hollister Avenue in Old Town?

Answered: 215 Skipped: 3



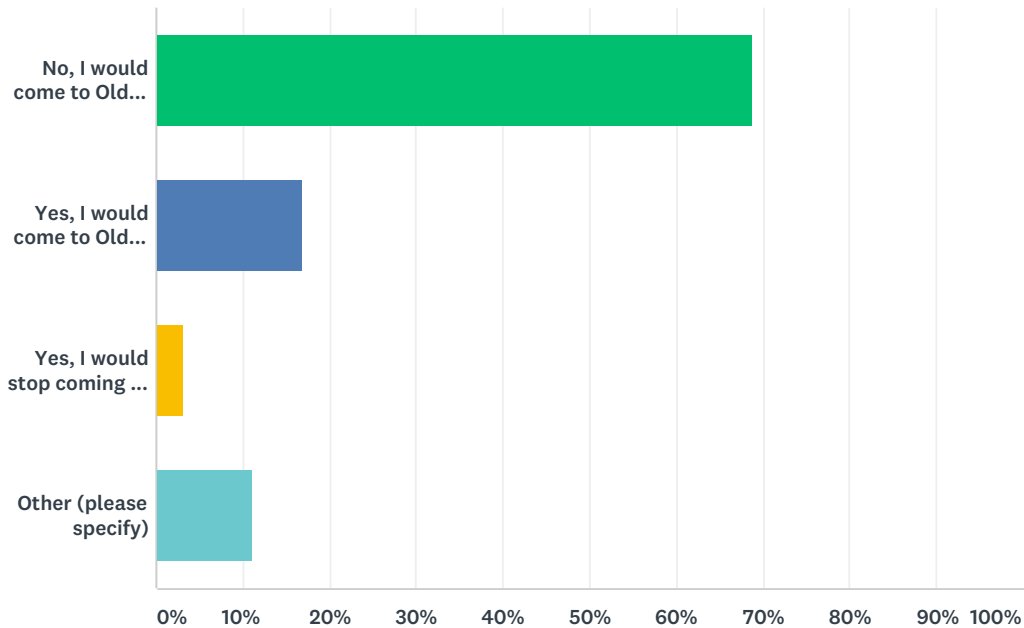
| ANSWER CHOICES | RESPONSES |
|---|------------|
| No, I would come to Old Town the same amount | 25.12% 54 |
| Yes, I would come to Old Town less frequently | 36.74% 79 |
| Yes, I would stop coming to Old Town | 24.19% 52 |
| Other (please specify) | 13.95% 30 |
| TOTAL | 215 |

| # | OTHER (PLEASE SPECIFY) | DATE |
|---|--|--------------------|
| 1 | Would never pay for parking. | 3/26/2018 8:09 AM |
| 2 | I can not afford anymore expenses, because of high rent and no rent controls. | 3/25/2018 10:26 PM |
| 3 | It would negatively impact the Mercury Lounge where I work. I need my job. We can't lose customers. Also musicians need to be able to load gear in from the front door and complete their sound check, needing a parking spot from 1-8 hours depending on if they leave before the show or not. If they stay, they are more likely to buy food nearby. | 3/21/2018 12:20 PM |
| 4 | I live in in old town. I would be here just as often. Since they neighborhood is so compact I would be concerned a fee would cause neighborhood parking to become more congested for residents and their visitors. | 3/20/2018 8:50 PM |
| 5 | I live in Old Town Goleta, so I would probably walk. But others would stop coming to Old Town Goleta, and it would be detrimental to the small mom & pop shops in the area. | 3/15/2018 1:49 PM |
| 6 | I might try to find parking farther away to avoid the fee | 3/15/2018 7:07 AM |
| 7 | I would be more likely to bike or walk or take the bus | 3/14/2018 10:13 AM |

| | | |
|----|--|--------------------|
| 8 | I live in old town, so I would likely park at my apartment building and walk to other areas in old town. Right now I sometimes park closer to where I am going if I was driving from somewhere else. | 3/14/2018 4:06 AM |
| 9 | Yes, I would still come to Old Town but I would park in retail lots instead. Easier and less handle. | 3/13/2018 10:54 PM |
| 10 | This is ridiculous!!! | 3/13/2018 10:11 PM |
| 11 | I would come if there was a free period before costing. | 3/12/2018 10:08 PM |
| 12 | I would just avoid Old Town | 3/8/2018 9:27 AM |
| 13 | Yes, because it would mean an extra fee to live here | 3/7/2018 5:12 PM |
| 14 | I live in Old Town - this would not change things for me. | 3/7/2018 12:07 PM |
| 15 | I work in Old Town | 3/7/2018 10:22 AM |
| 16 | I might come more often if parking were readily available | 3/5/2018 9:22 PM |
| 17 | I would probably come *more* frequently because I assume that parking might actually be easier to find | 3/5/2018 6:08 PM |
| 18 | What do I get for my money?How do you spend it? | 2/26/2018 4:04 PM |
| 19 | i work on pine ave | 2/25/2018 2:43 PM |
| 20 | As in comments below, businesses that have MANY employees should provide for their parking on their OWN premises. | 2/23/2018 3:58 PM |
| 21 | Merchant in Old Town here, so no changes would affect my parking routine | 2/22/2018 3:46 PM |
| 22 | I live in Old Town, so I really don't have a choice | 2/21/2018 10:41 PM |
| 23 | I work all day so I would still come to Old town but would have to make parking arrangements. | 2/21/2018 5:13 PM |
| 24 | I would only pay for expanded parking | 2/21/2018 2:06 PM |
| 25 | It's the inconvenience of looking for change to insert in a meter. | 2/21/2018 2:03 PM |
| 26 | I would only patronized business that offer free parking | 2/21/2018 1:29 PM |
| 27 | Find other free non restricted parking spots | 2/21/2018 1:24 PM |
| 28 | It depends on the fee. If it were low, it wouldn't change. Or if there were a free period, e.g. a meter had first 15 minutes free or a lot had first hour free. | 2/21/2018 1:21 PM |
| 29 | Why? Old town is so dumpy as it is, why discourage people from shopping there? | 2/21/2018 10:53 AM |
| 30 | I work in Old Town. I own the Goleta School of Ballet on Magnolia. | 2/21/2018 10:10 AM |

Q6 Would your behavior change if there were a time restriction of 90 minutes for free on-street parking on Hollister Avenue and adjacent streets in Old Town?

Answered: 218 Skipped: 0



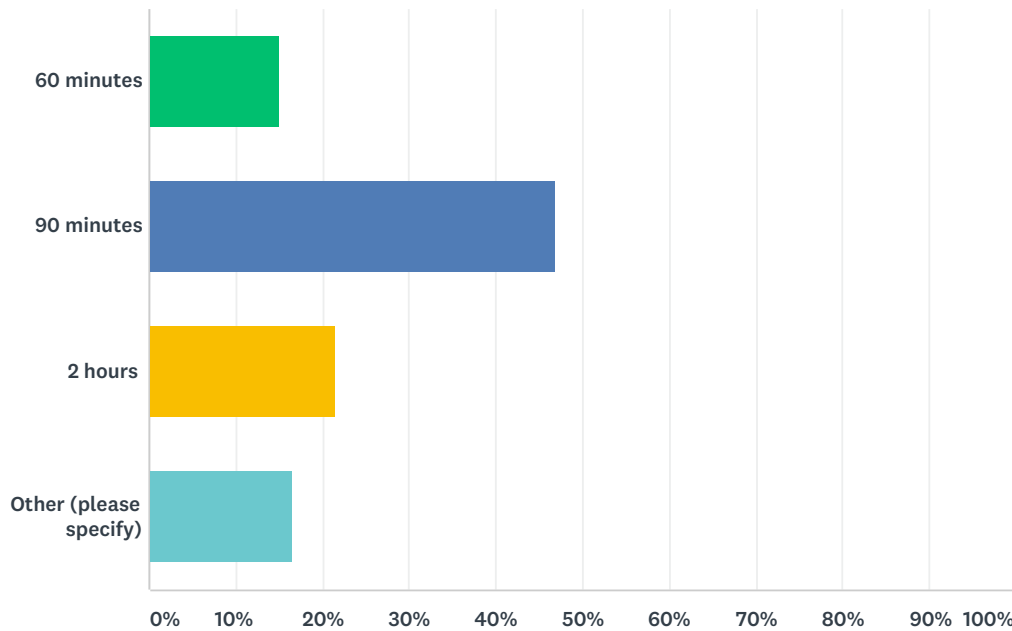
| ANSWER CHOICES | RESPONSES |
|---|------------|
| No, I would come to Old Town the same amount | 68.81% 150 |
| Yes, I would come to Old Town less frequently | 16.97% 37 |
| Yes, I would stop coming to Old Town | 3.21% 7 |
| Other (please specify) | 11.01% 24 |
| TOTAL | 218 |

| # | OTHER (PLEASE SPECIFY) | DATE |
|---|---|--------------------|
| 1 | Would absolutly stop visiting if parking tickets are issued or stupid tickets like no front license plate etc. | 3/26/2018 8:09 AM |
| 2 | I rarely go to old town. Just occasionally to the community center where it can take several tiles for me to find parking and occasionally go to places with free off street parking. I have limited retirement funds and because of high rent I am already being priced out of the area. | 3/25/2018 10:26 PM |
| 3 | My behavior can't change, I would love to bike but I have a leg injury. I work here, and am often forced to park on side streets during daytime work meetings because our private lot is so full from the public sneaking over to park there, mostly patrons of the nearby shops. Some are allowed to park there, but Noodle City is so busy for example that I sometimes can't get parked and in to work immediatly, and have to park blocks away and carry heavy loads in to work. My pay is already very low. A parking fee would be detrimental to both myself and our customer flow. | 3/21/2018 12:20 PM |
| 4 | I would come more often. | 3/19/2018 2:20 PM |
| 5 | This is unnecessary!!! | 3/13/2018 10:11 PM |
| 6 | I would be there more frequently! | 3/12/2018 10:08 PM |

| | | |
|----|--|--------------------|
| 7 | I'd probably come more often, because I'd assume there would be more open parking spaces | 3/8/2018 8:53 AM |
| 8 | Yes, as mentioned: it would be an extra fee living in Old Town | 3/7/2018 5:12 PM |
| 9 | Yes, I would come to Old Town more frequently. | 3/7/2018 1:36 PM |
| 10 | Even though I generally stay less than 90min, this would serve as a deterrent. | 3/7/2018 10:32 AM |
| 11 | I work in old town | 3/7/2018 10:22 AM |
| 12 | I would come more often | 3/5/2018 9:22 PM |
| 13 | i work on pine ave | 2/25/2018 2:43 PM |
| 14 | See comment below in question #7 | 2/23/2018 3:58 PM |
| 15 | same as above | 2/22/2018 3:46 PM |
| 16 | I live in Old Town, so I really don't have a choice | 2/21/2018 10:41 PM |
| 17 | I would have to park in the area with no restriction. | 2/21/2018 5:13 PM |
| 18 | 2 hour free parking would be best for when going to a restaurant. | 2/21/2018 2:47 PM |
| 19 | I might come more often if it was easier to find short term parking | 2/21/2018 2:06 PM |
| 20 | I need 2 hours per visit | 2/21/2018 1:29 PM |
| 21 | Find other non restricted parking spot | 2/21/2018 1:24 PM |
| 22 | I would come more because spaces would be revolving and I would have more access to parking | 2/21/2018 1:08 PM |
| 23 | I barely find reasons to go to old town as it is ans probbalt would prioritize my shopping elsewhere | 2/21/2018 10:53 AM |
| 24 | I need to park 4 hours, M-F 3:15-7:15, Saturdays 5 hours. | 2/21/2018 10:10 AM |

Q7 What is your preferred amount of time for free on-street parking along Hollister Avenue and adjacent streets in Old Town ?

Answered: 218 Skipped: 0



| ANSWER CHOICES | RESPONSES |
|------------------------|------------|
| 60 minutes | 15.14% 33 |
| 90 minutes | 46.79% 102 |
| 2 hours | 21.56% 47 |
| Other (please specify) | 16.51% 36 |
| TOTAL | 218 |

| # | OTHER (PLEASE SPECIFY) | DATE |
|---|---|--------------------|
| 1 | Free parking 24 hours day or night with 72 hour limit. | 3/26/2018 8:09 AM |
| 2 | Need extended time for handicapped parking like other places including Santa Barbara. | 3/25/2018 10:26 PM |
| 3 | 75 min | 3/22/2018 7:12 PM |
| 4 | unlimited free parking. Regarding Hollister specifically, also no time limit on parking. Parking signs on the street are ugly and greatly change the face of our town. Plus, monitoring is expensive. Stop increasing administration fees and leave our town as it is. IF any parking changes anywhere there is some kind of dire impact, at least 4 hours is needed so one can park and walk to do all their errands, laundry, shopping, banking, etc. Help us to lower our carbon footprint! Not everyone is able to bike a longer distance to do these things, either. | 3/21/2018 12:20 PM |
| 5 | Unlimited | 3/21/2018 6:27 AM |
| 6 | 90min plus more handy cap parking availability | 3/21/2018 2:01 AM |
| 7 | 30 - 90 minutes depending on location. On residential streets each residence should have a specified number of street permits (maybe 2) exempting them or their guests from the limit | 3/20/2018 8:50 PM |

| | | |
|----|---|--------------------|
| 8 | Some of those "adjacent streets" are areas where people live. So if you begin to place limits on where people can park on, especially later during the day, and at night. It would cause undue and unnecessary traffic to the nearby homes, and streets in Old Town Goleta. | 3/15/2018 1:49 PM |
| 9 | 30min | 3/14/2018 8:30 PM |
| 10 | 4 hours | 3/14/2018 4:56 PM |
| 11 | Not metered..this is Goleta not Santa Barbara!!! | 3/13/2018 10:11 PM |
| 12 | 4 hours | 3/13/2018 11:55 AM |
| 13 | Never been a problem so I have no opinion. | 3/13/2018 10:22 AM |
| 14 | 75 min in some. 20 min in many | 3/12/2018 8:36 PM |
| 15 | NO LIMIT | 3/12/2018 2:26 PM |
| 16 | doesn't matter - Old town is a DUMP and I try to avoid it like the plague. | 3/12/2018 1:27 PM |
| 17 | 3 hours. If I want to get my hair done and have lunch | 3/11/2018 1:28 PM |
| 18 | cars over 4 hours get a ticket | 3/9/2018 1:42 PM |
| 19 | 75 minutes, similar to Santa Barbara | 3/7/2018 1:59 PM |
| 20 | don't think should charge for it. | 3/7/2018 10:22 AM |
| 21 | don't charge for parking period | 3/6/2018 7:39 AM |
| 22 | All day long | 3/5/2018 7:12 PM |
| 23 | for my clients; to prevent all day parking in front of my business | 2/25/2018 2:43 PM |
| 24 | 75 minutes, like free parking in SB. Enough time for lunch. | 2/24/2018 10:22 AM |
| 25 | 60 minutes is fine for shoppers, but for employees, no fees should be charged as we cannot leave our jobs to move our cars. | 2/23/2018 3:58 PM |
| 26 | I would not pay to park in old town. | 2/22/2018 3:40 PM |
| 27 | zero free time. | 2/22/2018 12:15 PM |
| 28 | 30 min | 2/21/2018 10:16 PM |
| 29 | Off street parking for rentals and workers | 2/21/2018 6:03 PM |
| 30 | 90 mins. allows time to eat in a restaurant. | 2/21/2018 6:02 PM |
| 31 | Unlimited. This is not a problem. Lived here whole life. | 2/21/2018 1:55 PM |
| 32 | bike lane | 2/21/2018 1:06 PM |
| 33 | shorter times in front of the bookstore and other shops where patrons don't need an hour | 2/21/2018 12:40 PM |
| 34 | 4 hours | 2/21/2018 10:10 AM |
| 35 | Parking should be free. This is a lower income area | 2/21/2018 5:49 AM |
| 36 | Don't charge for parking | 2/20/2018 10:01 PM |

Q8 Please tell us anything else we should know about parking in Old Town Goleta.

Answered: 105 Skipped: 113

| # | RESPONSES | DATE |
|----|---|--------------------|
| 1 | As a smart cyclist I'm opposed to bike lanes. We dont need them at all. Safe free parking and wide roads are better option for everybody. How much money would we save without stupid bike lanes and useless islands? Enough to park for free and help retain local business? Enough to keep parking enforcement from breathing down our neck? How about a fre "share the road" bike signs instead? | 3/26/2018 8:09 AM |
| 2 | High curbs along Hollister make access to the stores.i drive through | 3/25/2018 10:26 PM |
| 3 | A lot of corner blind sides from cars parked in the corners | 3/25/2018 8:34 PM |
| 4 | I think 90 minute parking is adequate. For businesses, maybe they could have a parking pass for longer. I know parking on the side streets are used for residents. Maybe resident passes for those streets. | 3/25/2018 11:41 AM |
| 5 | If you're planning on making a park, include some of that land as a parking lot | 3/25/2018 11:28 AM |
| 6 | Too many cars in single resident homes. | 3/25/2018 10:58 AM |
| 7 | Money would be better spent on running a street sweeper through once per month. There is also some kind of trash problem happening, even on top of the newly landscape areas on Hollister between Magnolia and Rutherford, where I walk to do my errands to stores, before work, and often for work. Perhaps we need more low budget public trash receptacles, or some kind of program incentivizing people(the public/landlords/tenants/anyone) to help keep sidewalks and lots clean and trash in the receptacle. Please read about an innovative solution to a trash problem in Curitiba, Brazil, and the bus tokens(and now food) given out by city as a way to reward it's citizens for partaking in helping clean up the city. It is a success. https://www.huffingtonpost.com/roberta-brandes-gratz/curitiba_b_3713953.html If any monitoring is to be done, I would hope it is in the form of watching over those who are throwing or letting their trash making it to the ground. Parking is less of a problem that this. However, wouldn't it be great if parking credits could also be earned to be used to pay for parking downtown? I volunteer a lot of my time, I donate to local and greater causes, and I'm an activist living far below the local poverty line. It would be truly fantastic to think of other ways in which problems can be solved with careful, slow planning and innovative thinking and programs. Regarding parking in Old Town, Old Town is one of the last precious small place we have left in Southern California, please don't deface it with any more development that isn't necessary. | 3/21/2018 12:20 PM |
| 8 | So much illegal parking in the back streets of Hollister. Someone has already been going around giving tickets which has helped immensely. Don't stop there! Paint red corners that way drivers aren't blinded by parked cars. | 3/21/2018 2:01 AM |
| 9 | Staff of businesses frequently park all day in residential areas to save parking for customers/clients creating congested streets and lots of foot traffic. It would be great if there were somewhere else for them to park. A parking structure at each end of hollister going into and out of old town would be ideal. Staff of businesses could purchase structure parking passes by the month and easily walk anywhere in old town. The structures would be great for people coming to shop or eat as well. | 3/20/2018 8:50 PM |
| 10 | Too even wide street. Sidewalks very high | 3/20/2018 8:00 PM |
| 11 | The side walk is to high. You cant even open the passangers door. | 3/20/2018 7:49 PM |
| 12 | Seems just fine. | 3/19/2018 5:23 PM |
| 13 | There is no parking in Old Town to speak of, I believe business's have closed for that reason. | 3/19/2018 2:20 PM |
| 14 | I have the perception that there is limited/no parking in Old Town, especially for the North side of Hollister, which is a deterrent for visiting businesses on the north side. | 3/19/2018 12:07 PM |
| 15 | I want a place for bikes and pedestrians | 3/16/2018 4:51 PM |

| | | |
|----|---|--------------------|
| 16 | Although there may be issues with parking in Old Town Goleta, most of the issues occur during traffic hours. Since many cannot parallel park, and struggle for minutes, causing a traffic jam on the 2 lanes. But other than that, most people who live/work/visit Old Town Goleta are accustomed to utilizing parking lots, from businesses' if they cannot find parking on the street. I am one of those, who prefers to park in a parking lot, that attempt to park on the street. | 3/15/2018 1:49 PM |
| 17 | I like it how it is. | 3/15/2018 12:05 PM |
| 18 | Please don't put in meters, old town is quaint and a part of our Goleta (don't make it look like the Glen Annie/Hollister area. Keep Goleta the Goodland | 3/15/2018 7:07 AM |
| 19 | I've heard about the possibility of using diagonal parking spaces on Hollister. We had that back in the 60s and it was changed to accommodate extra lanes on Hollister. It may allow more parking spaces but would add to traffic congestion. | 3/14/2018 8:53 PM |
| 20 | There is cars parked there all day eve though they're 90 min parking. Probably even overnight I saw a garner truck with trash I. The back and was still there today when I took my lunch around 2pm. You need to enforce parking restrictions | 3/14/2018 8:30 PM |
| 21 | Not sure if that is possible - or would really help - but maybe appropriate markings could be added to side streets to properly identify parking spots (size etc.) | 3/14/2018 6:11 PM |
| 22 | Rarely have trouble finding free parking on Hollister street or side streets between Fairview & the Fwy to UCSB. | 3/14/2018 4:56 PM |
| 23 | Side street parking is essential as sometimes there is no parking on hollister. Also, many times we will not frequent restaurants at the lunch hour due to lack of parking. | 3/14/2018 1:29 PM |
| 24 | We've often left Old Town without being able to park, and instead visit other areas of town. This isn't an easy task. Thank you to everyone involved. | 3/14/2018 10:52 AM |
| 25 | it's pretty easy to find | 3/14/2018 10:13 AM |
| 26 | The City should develop a retail district map and institute a parking assessment fee to business owners and or property owners. The fee could go towards parking enforcement, maintenance, materials. Is it possible for the City to create a bond measure or retail tax that would pay to purchase land for a public parking structure and create an enterprise fund that would pay for operating the parking structure. | 3/14/2018 9:21 AM |
| 27 | street parking disrupts the flow of traffic constantly as people try to parallel park and bicycles are difficult to move around when parking. | 3/14/2018 8:41 AM |
| 28 | Old town restaurants serve many low income residents and I worry that parking fees could shift old town away from the community it currently serves. In terms of parking in the residential areas on the mountain side of Hollister, we should also be cognizant of the importance of family gatherings to the community. Resident only parking can make it hard for family members and friends to visit. | 3/14/2018 4:06 AM |
| 29 | Whatever decision is made, please invest in an electronic solution. There are many great apps out there that highlight open parking spots as well as paying for those spots within the allotted times. If I know that I can use my app to find and pay a reasonable price for a parking spot within 10 minutes of my arrival, I would not have any issues. Also, provide Old Town residents with decals for parking. And make certain areas, decal only parking during hours of the day/night when people are home. | 3/13/2018 10:54 PM |
| 30 | Stay the hell out. The less government in oldtown the better. We're doing just fine we don't want metered parking, we don't want gentrification aka white takeover and we don't need you changing anything. Old town Goleta is the last spot that is virtually untouched by greedy hands and it is the only place in Santa Barbara and Goleta where the business are turning over each year due to failure, why??? Because it's FINE JUST THE WAY IS. Please don't fuck it up for us!!! Thank you. | 3/13/2018 10:11 PM |
| 31 | Many of the apartments and multi family residences do not have adequate off-street parking for the dense population and all of the vehicles from the tenants. I live in old town about 3 or 4 blocks north of Hollister and frequently people will park on the street in front of my house and walk several blocks to their home because there is no available parking on their street. | 3/13/2018 8:44 PM |
| 32 | Parking would be better if enforcement tagged abandoned vehicles along the side streets without being prompted for complaints. | 3/13/2018 4:08 PM |
| 33 | There is a huge need for more residential parking, let alone business parking. These really need balance. | 3/13/2018 11:55 AM |

| | | |
|----|---|--------------------|
| 34 | I think 2 hours of free parking is very important. People may come for a long lunch and want to also shop. People may have appointments that are extended and we should let them have time to visit other businesses also. Going north, the time limit should only be half a block deep. Going south it could go Gaviota or Carson Street. If the businesses south want to keep street parking for employees it could go just a half block deep. Thanks! | 3/13/2018 10:45 AM |
| 35 | I am in old town a lot - I have walked in it, driven in it, parked in it and sometimes ride my bike in it. I have never had any difficulty with any of it. Everything works. Leave it alone! | 3/13/2018 10:22 AM |
| 36 | Right now, I can never find a space within a few blocks of where customers want to go. | 3/12/2018 10:08 PM |
| 37 | I think the city should consider offering to buy private property on adjacent streets and build small 2 level parking structures with free parking for 90 min. Start with one in the busiest area and see how it goes | 3/12/2018 8:36 PM |
| 38 | it is not organized enough and it's not well indicated | 3/12/2018 5:40 PM |
| 39 | The sidewalks on the north side of hollister make it hard to get out of short cars. Please keep parking free!! | 3/12/2018 4:49 PM |
| 40 | LEAVE IT ALONE | 3/12/2018 2:26 PM |
| 41 | Parking is fine, unless you bulldoze the dump and put up something nice in its place - then, parking might be an issue. | 3/12/2018 1:27 PM |
| 42 | We need more parking! Maybe the city could buy some private lots and make them public parking lots? | 3/12/2018 12:03 PM |
| 43 | Not enough parking lots | 3/11/2018 1:28 PM |
| 44 | on street is critical to the local biz and take the pressure off the neighborhoods to let people park in front of their houses. | 3/9/2018 1:42 PM |
| 45 | I would prefer less of an emphasis on street parking on Hollister, and more emphasis on using public lots. This would enable Old Town to have more of a downtown town square feel, and maybe allow shops to expand their store fronts with patios. It would be nice if Hollister was not so much of a thoroughfare. | 3/9/2018 6:04 AM |
| 46 | If we had angled parking spaces on Hollister, that would increase the parking spots available, and solve the problem. | 3/8/2018 12:11 AM |
| 47 | The curbs are way too high. Scrape the bottom of door when opening or can't open. | 3/7/2018 6:09 PM |
| 48 | In my opinion, a one side sidewalk on Mandarin Dr will not be effective. Many cars park there as of right now, and those people live there. Not only that, but traffic would be extreme. A one side sidewalk would mean a one way route and there are many people who come and go to work, school, etc. Another factor are the residents. Some people have fences, pavement, granite, and other sorts of barriers that will obstruct the creation of the sidewalk, and people will not be happy to get rid off for the sake of this project. Please keep in mind that many residents work, and many will not be able to have a voice on this decision that you will speak about on Wednesday. | 3/7/2018 5:12 PM |
| 49 | Sidewalks are so high in places that on street parking is problematic. | 3/7/2018 1:52 PM |
| 50 | If we could build a parking structure then we could eliminate on street parallel parking which would free up space for biking and make Hollister safer for driving. | 3/7/2018 12:19 PM |
| 51 | 1. Consider increasing total parking by integrating angular parking. 2. Add a lot near/at Kellogg Square or acquire the Nissan Used Car lot and convert to a parking lot. The east end of Hollister needs more parking. | 3/7/2018 12:17 PM |
| 52 | If parking becomes restricted on or adjacent to Hollister, this will push cars farther into the residential neighborhood and probably make things worse for those of us who live here. | 3/7/2018 12:07 PM |
| 53 | parking on side streets off Hollister is almost impossible because of employees parking,--- and residents parking on the street because of no off street parking at their residents, or businesses. | 3/7/2018 11:14 AM |
| 54 | There is a general lack of parking. | 3/7/2018 11:03 AM |
| 55 | Dangerous close to corners parking needs to be red curbed plus fire hydrant areas as people don't respectfully park to follow the rules. Gotta get rid of the "storage" cars just left on the side streets. | 3/7/2018 10:22 AM |
| 56 | Old Town is not trendy. It is not a tourist town. It is a community of working people. This would be a severe issue with the local community. | 3/7/2018 10:22 AM |

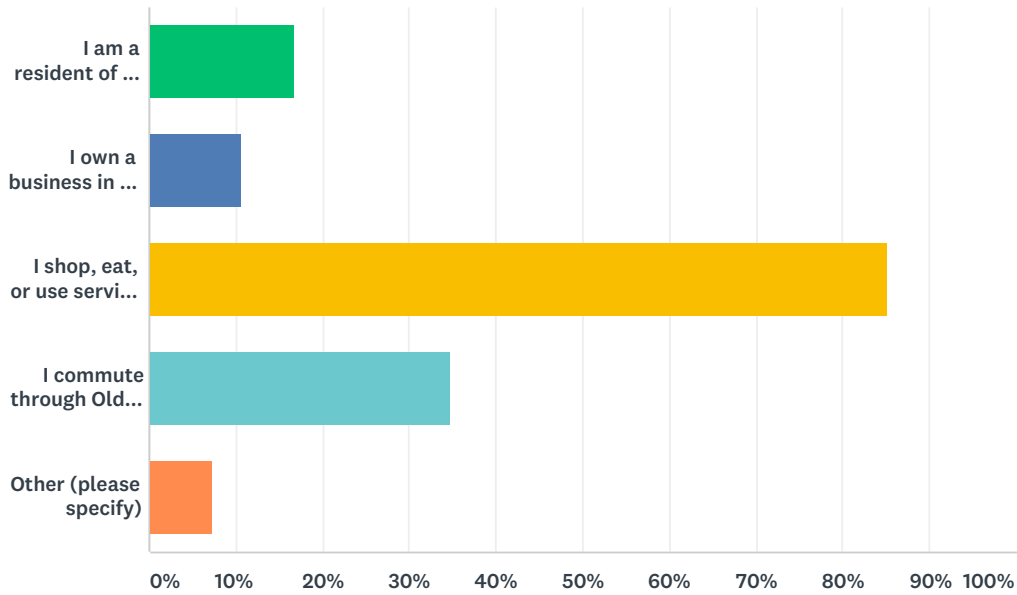
| | | |
|----|---|--------------------|
| 57 | Too many driveways that aren't really driveways anymore..but you still can't park there | 3/5/2018 10:02 PM |
| 58 | Is a small town with a lot of traffic, some times is so hard and dangerous to cross the street in that area. | 3/5/2018 9:30 PM |
| 59 | I would like to visit shops and restaurants in old town Goleta more but parking is a nightmare. I often give up and go elsewhere. | 3/5/2018 9:22 PM |
| 60 | Generally I go shopping or eating and can find the retail parking lot for the establishment I'm visiting. If not, street parking on hollister can be a hit or a miss. I definitely wouldn't mind timed parking as a visitor to the Goleta area. | 3/5/2018 8:41 PM |
| 61 | Keep out the techies, hipsters & computer geeks! | 3/5/2018 7:12 PM |
| 62 | It's probably the *main* reason I rarely go to "Old Town". Shopping and dining at Camino Real or Fairview/Calle Real is much easier. It's unfortunate because there are some places on Hollister I'd probably go to more often if parking wasn't a crapshoot. | 3/5/2018 6:08 PM |
| 63 | i would like to see vertical parking on hollister with only one lane traffic each way. and 90 min on dawson and pine to dawson. that large businesses like UPS provide their employees parking off street. | 2/25/2018 2:43 PM |
| 64 | All the car dealership employees park on the opposite side of Kellogg Ave. They should park on their own side or use the Butler Events parking lot or better yet their own. Employees for Alpha have little to no parking available to them. | 2/23/2018 3:58 PM |
| 65 | Keep the differentiation of Old Town. Don't make it an easier decision for consumers to buy on Amazon. | 2/23/2018 11:32 AM |
| 66 | Old Town competes with both Camino Real and Calle Real shopping centers, both of which have (mostly) plentiful, free parking. I choose Old Town less frequently because parking is not plentiful, but at least it is still free. If that changes, it is likely going to hurt patronage. | 2/23/2018 11:00 AM |
| 67 | Parking along Hollister is dangerous for bicyclist. When changing parking please improve the safety for cyclists! | 2/22/2018 8:57 PM |
| 68 | most of the parking on hollister is from people the live in the near by areas | 2/22/2018 6:02 PM |
| 69 | Extra parking is desperately needed, timing and enforcing time limits for parking is an effective measure | 2/22/2018 3:46 PM |
| 70 | Although i often frequent old town for various reasons, it is not a nice enough area to justify charging people to park. Old Town is basically the ghetto of Goleta. | 2/22/2018 3:40 PM |
| 71 | There are an absurd amount of vehicles that park long term on the streets near Hollister. The 72 hour limit that is in place isn't effective as there is no distance requirement to move cars. People just move to the other side of the street and continue to abuse the street parking. Solve this, and you don't need to do anything else. | 2/22/2018 12:29 PM |
| 72 | Need larger parking lots. On street parking is dangerous with all that traffic racing around. I would actually shop there if I could feel safe parking my car. | 2/22/2018 8:34 AM |
| 73 | With the business lots, it is not a problem. The biggest problems with parking on Hollister are: trying to open passenger doors against the tall curbs, and parallel parking in traffic. | 2/22/2018 7:55 AM |
| 74 | Some of the parking issues on Hollister for businesses could be helped by addressing the amount of street parking within the neighborhoods in Old Town. | 2/21/2018 10:41 PM |
| 75 | The street parking on Hollister makes it dangerous for bicyclist to negotiate getting through Old Town. | 2/21/2018 10:16 PM |
| 76 | Addition of public parking has been helpful, but issues are still present. | 2/21/2018 10:10 PM |
| 77 | It could use a large city lot within 2 blocks | 2/21/2018 9:11 PM |
| 78 | Your survey should allow multiple answers. Sometimes I park in private retail lots as I prefer that to on street parking, but sometimes there isn't a lot and I park on the street. What I would really like is if Hollister (and Fairview) was more bike-friendly and I could bike over there. | 2/21/2018 5:56 PM |
| 79 | On-Hollister parking is a pedestrian hazard, and should be minimized. | 2/21/2018 5:38 PM |
| 80 | IF I MAKE ONE PASS AND FAIL TO FIND A SPACE, I GIVE UP THE ERRAND. I USUALLY DO NOT TRY AGAIN ANOTHER DAY. | 2/21/2018 5:32 PM |

| | | |
|----|---|--------------------|
| 81 | I would like to see diagonal parking like the old days! It would accommodate more parking I think. | 2/21/2018 5:24 PM |
| 82 | There are too many people that need parking to even consider eliminate parking on Hollister. We can live with restricted parking more than 1 block away and timed parking within 1 block. Anything else and the people including both residents, customers and employees have no place to park. | 2/21/2018 5:13 PM |
| 83 | One issue seems to be tied to the residential area in Old Town that lots of people living in the area have multiple cars that stay on the street and get re-parked every couple days - there is nowhere to park over on Armitos where we have friends. I shop at Santa Cruz market all the time so I use that lot for shopping and I go to the Little Dog House frequently and can never find a spot there so I park across the street, etc. I would love to go to Paperback Alley regularly but Good Luck parking anywhere close to that section of Old Town--something needs to be done! I'm willing to pay if I can find a spot! | 2/21/2018 4:02 PM |
| 84 | There is very little parking availability. Perhaps angle parking would help as well as narrowing the street and making it safer for pedestrians. | 2/21/2018 3:38 PM |
| 85 | I strongly dislike the public parking in the Community West Bank lot. There are way too many times I need to go to that bank and the lot is full, yet the inside of the bank is empty. It is being abused. | 2/21/2018 3:26 PM |
| 86 | People have more than one car and when they move one they replace it with the othe car. | 2/21/2018 3:19 PM |
| 87 | I live in old town, Kinman and Armitos. Our parking situation comes and goes with congestion issues. The main problem with parking beyond Hollister is that people are able to store cars on the public streets indefinitely. You can wait to get an orange sticker and then move your car, the sticker is then void. This can be done forever. I have talked to all authority figures involved. One time in 2016 I kept track of our neighborhood and watched parked cars for a few weeks. I was able to report as I recall 24 cars that did not move for more than 3 days. One household was collecting cars and still does.between 2 guys that lived at the residence a few houses from mine, they had collectively more than 10 cars moving among our streets. There was nothing the neighborhood could do,about this situation, believe me I tried everything. I know the public street are governed by the vehicle code and also know the city can pass their own codes. The only way this problem will be solved is by permits parking on our city streets. Many people are using there driveways to store long term car projects. | 2/21/2018 2:51 PM |
| 88 | Please do not install parking meters. | 2/21/2018 2:40 PM |
| 89 | keep hollister open for traffic to move smoothly. any 101 closure has an effect. | 2/21/2018 2:33 PM |
| 90 | Needs MORE parking | 2/21/2018 2:06 PM |
| 91 | It's a pleasure to get free parking, and encourages me to shop there. I almost always find a space within a f ew minutes. | 2/21/2018 2:03 PM |
| 92 | There is not a major parking issue in old town. At worst you are parking 2 blocks away in a nice neighborhood. Putting fees for parking will harm access to restaurants and business. Putting limits on my parking will limit my amount of time I will be willing to spend in businesses. No more long business meetings, no more large family dinners. This seems to be an overly litigious solution to a very minor problem. Want to solve the perceived "problem" put a limit of 3 hours until 5PM. After that it MIGHT make sense to use a meter maid. But please take a moment to consider how much the meter maid will cost the city and how this will negatively effect businesses. | 2/21/2018 1:55 PM |
| 93 | I know this is about parking. But we need a bike lane that conforms to the new law requiring 3 feet of clearance between riders and drivers. That stretch is the worst driving, walking and biking in all of south county. | 2/21/2018 1:33 PM |
| 94 | What would the distance be that a car would have to be moved after the time limit to not be cited? | 2/21/2018 1:29 PM |
| 95 | The curbs are very high in some spots making it difficult to get out of the passenger side of the car. | 2/21/2018 1:21 PM |
| 96 | There isn't very much bicycle parking | 2/21/2018 1:06 PM |
| 97 | If I can't find parking on Hollister near the shops I want to visit, I just leave. If you make it so people are parking longer in the spots that should be for quick visits, more people will just leave instead of searching for parking | 2/21/2018 12:40 PM |
| 98 | Street fee Parking is a bad idea. You are better off adding a shuttle going up and down Hollister | 2/21/2018 10:53 AM |
| 99 | The parking has gotten better since Magnolia Ave. since the new sidewalks went in on the Ocean side of Hollister. Also, the public lot helps. What really takes up parking throughout the day is the employees from Envirosaping Inc on Pine and abandon vehicles. | 2/21/2018 10:10 AM |

| | | |
|-----|---|--------------------|
| 100 | Old town is extremely busy, but adding paid parking does not uphold the spirit of Goleta. This is a lower income area. Please don't allow this. | 2/21/2018 5:49 AM |
| 101 | Parking fee for old town as long as Goleta gets to keep the funds and not give the funds away to the county. | 2/21/2018 1:31 AM |
| 102 | I think paid parking significantly hurts business, especially restaurants where people are just trying to grab a quick bite to eat. | 2/21/2018 12:21 AM |
| 103 | Hate parallel parking. Lots are the best!! | 2/20/2018 11:03 PM |
| 104 | Keep old town like it is.. there is no problem | 2/20/2018 10:01 PM |
| 105 | Public parking and a safer, walkable environment would encourage me to patronize more businesses in one visit. | 2/20/2018 2:31 PM |

Q9 Please check all choices that describe you

Answered: 216 Skipped: 2



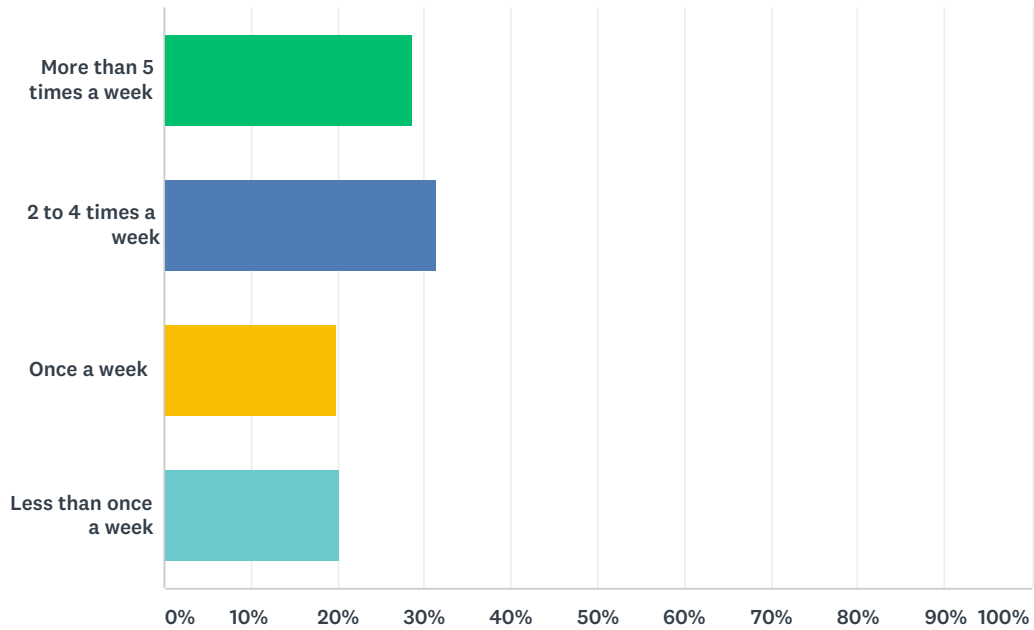
| ANSWER CHOICES | RESPONSES |
|--|------------|
| I am a resident of Old Town | 16.67% 36 |
| I own a business in Old Town or work in Old Town | 10.65% 23 |
| I shop, eat, or use services in Old Town | 85.19% 184 |
| I commute through Old Town on Hollister Avenue | 34.72% 75 |
| Other (please specify) | 7.41% 16 |
| Total Respondents: 216 | |

| # | OTHER (PLEASE SPECIFY) | DATE |
|---|--|--------------------|
| 1 | I drive through Hollister often, but find it difficult to access business in the area. | 3/25/2018 10:26 PM |

| | | |
|----|--|--------------------|
| 2 | I am native to Noleta and graduated from San Marcos High in 1998. My parents worked near Old Town at GTE/Verizon, and now I work in Old Town too. Please, we do not want to become like the rest of the world, upscale, expensive to visit, and devoid of historical character. Please imagine that beautiful Northern California or Oregon town you love to visit. You love it because the history has been preserved, it is clean and charming, and you aren't reminded of "limitations"(in the form of parking limits) or that you need to "pay now". We are working and living out here for a reason. A question for you, is there talk of implementing parking limits, which also means monitoring, and/or fees over on the other side of the freeway in "New Town"? I also hope not. we could all use a place to go get our shopping done and maybe have a massage where we aren't worried about having to move our cars within 90-120 minutes. Let's keep the Good Land Great, and a worry free experience. We need that more than ever. May I please suggest that the City of Goleta look to lead the way as far as innovative thinking and slow, conscious, sustainable development goes? To me, that means carefully researched plans, targeting not monetary growth for the city but rather care of it's citizens and incorporating strong community plans that are good for everyone. There have to be some excellent examples somewhere of towns that have evolved, and not necessarily grown, in this way. Lucky us here in Goleta that it is 2018, and knowing what we know, we have the opportunity to thoughtfully evolve into the best version of ourselves that we can. Allowing Autozone to move in, by the way, isn't my idea of a great version of Old Town Goleta. We don't want fancy cliché storefronts and shopping. We want to keep the community here, with the old signs that do remain, adding beauty to the area, and all the Mexican flavor that is here, that is us. Just thought to say this- please "Keep Old Town a Slow Town". Thank you for your time and thought. I was such the day of the Wednesday morning meeting with a migraine, otherwise I planned to attend. Please contact me if you wish- Mariah Moon 805-451-3071, aquamoon42@hotmail.com, Thank you. | 3/21/2018 12:20 PM |
| 3 | I care about old town more than anyone on the city council | 3/13/2018 10:11 PM |
| 4 | I live in north Goleta, but like the shops in old town. | 3/12/2018 10:08 PM |
| 5 | I pass through Old Town on Hollister when traveling to businesses in or near Old Town but are not on Hollister Av. | 3/8/2018 9:40 PM |
| 6 | I only shop in Old Town. | 3/8/2018 9:27 AM |
| 7 | Now and again I have to do business there | 3/8/2018 12:13 AM |
| 8 | Business on airport | 2/26/2018 4:04 PM |
| 9 | Parking is horrible as all the Toyota/car lot employees take up all available parking. They need to park on their own property. | 2/23/2018 3:58 PM |
| 10 | I ride my bike daily thru old town to get to/from work | 2/22/2018 8:57 PM |
| 11 | I have friends who live in Old Town. | 2/21/2018 4:02 PM |
| 12 | Born and raised in Santa Barbara and have been shopping/eating in Goleta Old Town area all my life. | 2/21/2018 2:40 PM |
| 13 | I have lived in old town twice in my life and have many friends that still live there. I visit frequently. | 2/21/2018 1:55 PM |
| 14 | I used to live in Old Town and frequently visit for shopping and eating | 2/21/2018 12:40 PM |
| 15 | Native who visits yearly | 2/21/2018 7:47 AM |
| 16 | I visit family in Old Town frequently. | 2/20/2018 2:31 PM |

Q10 How frequently are you in Old Town?

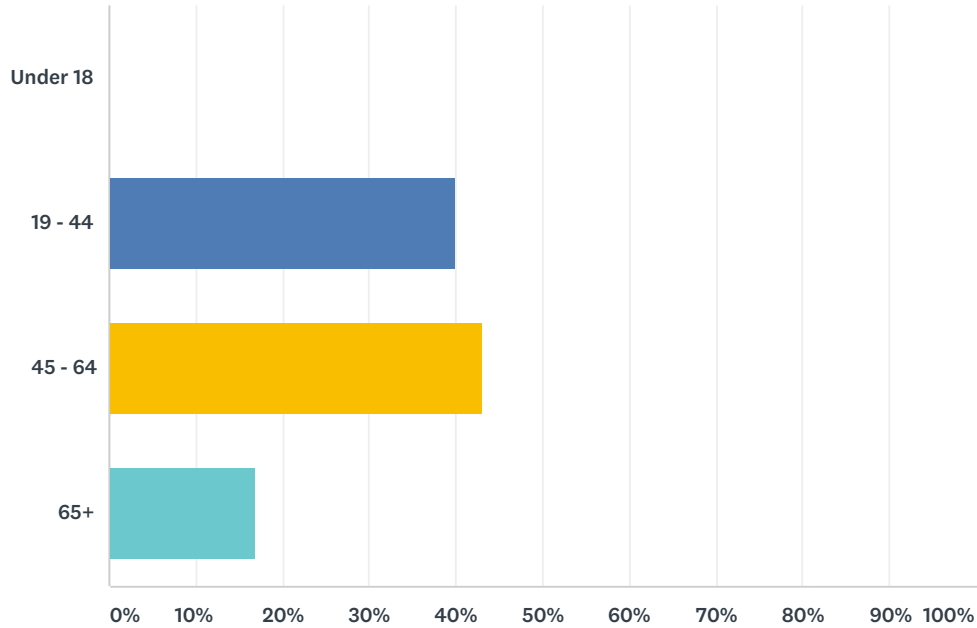
Answered: 217 Skipped: 1



| ANSWER CHOICES | RESPONSES | |
|--------------------------|-----------|-----|
| More than 5 times a week | 28.57% | 62 |
| 2 to 4 times a week | 31.34% | 68 |
| Once a week | 19.82% | 43 |
| Less than once a week | 20.28% | 44 |
| TOTAL | | 217 |

Q11 What is your age group?

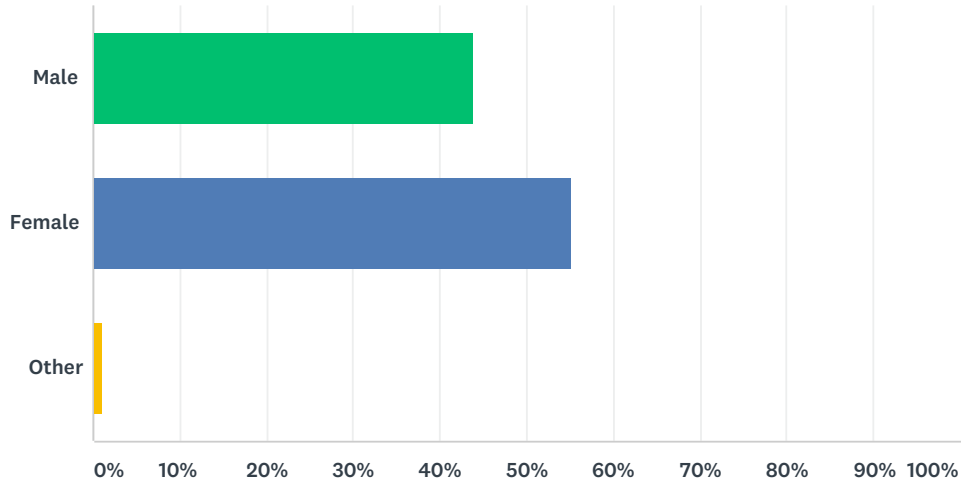
Answered: 213 Skipped: 5



| ANSWER CHOICES | RESPONSES |
|----------------|-----------|
| Under 18 | 0.00% 0 |
| 19 - 44 | 39.91% 85 |
| 45 - 64 | 43.19% 92 |
| 65+ | 16.90% 36 |
| TOTAL | 213 |

Q12 What gender do you identify with?

Answered: 212 Skipped: 6



| ANSWER CHOICES | RESPONSES | |
|----------------|-----------|-----|
| Male | 43.87% | 93 |
| Female | 55.19% | 117 |
| Other | 0.94% | 2 |
| TOTAL | | 212 |

Q8 Please tell us anything else we should know about parking in Old Town Goleta.

Curbs Worst Effective Pedestrians Space Kellogg
Businesses Door Parking on Hollister
Diagonal Parking Street Parking Trash
Old Town Driveways Public Parking Drivers
Parallel Parking Meters Limit Planning Corners

Attachment 2

Old Town Parking Stats—Excel Spreadsheet

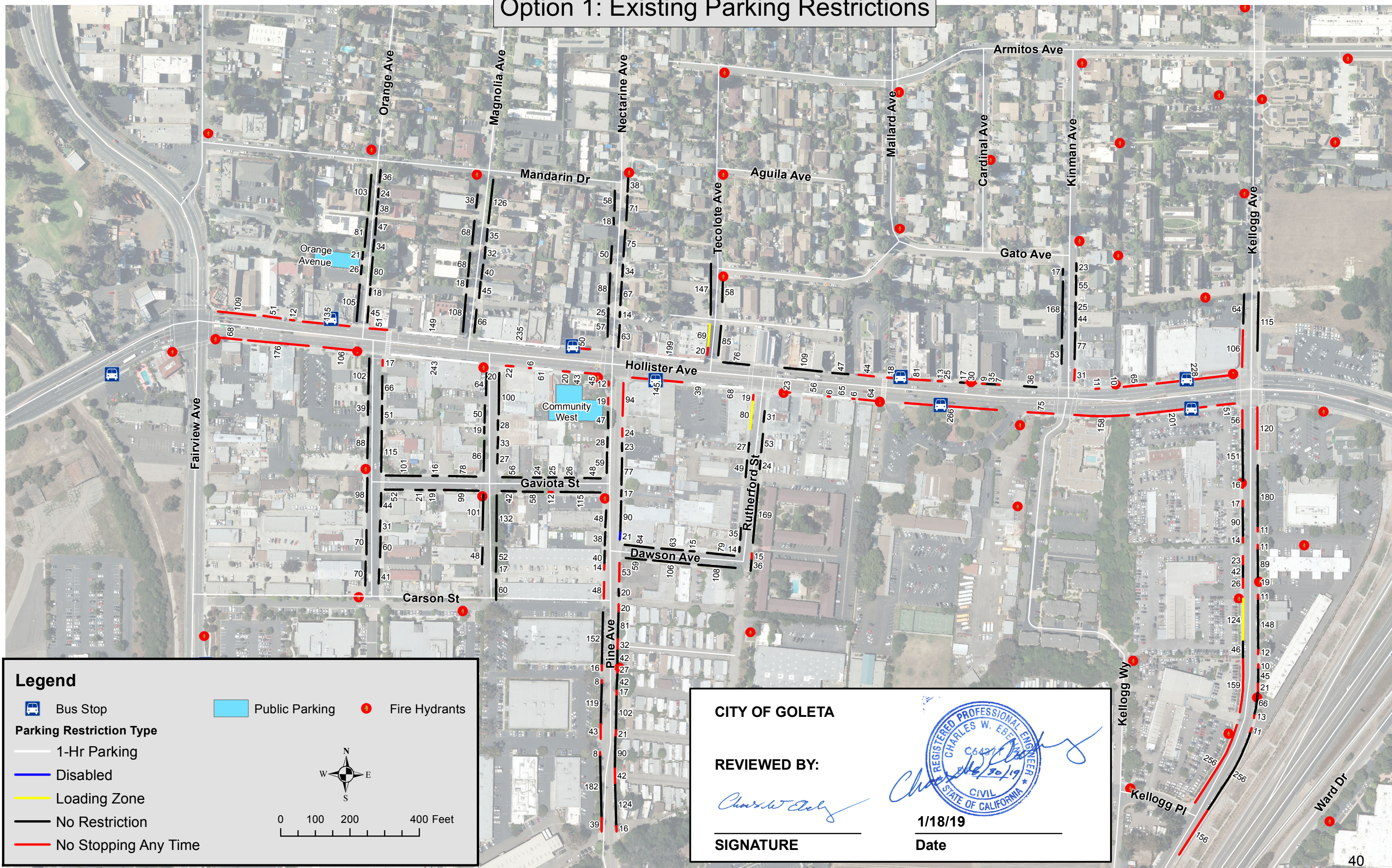
Parking Statistics

| Location | From | To | Street Side | Option 1: Existing Conditions Existing | | | | Option 2: Existing + Sight Distance Restrictions | | | | | Option 3: Portion of Safety Enhancements + 90-Minute Parking on Hollister | | | | | Option 4: Option 2 + 90-Minute Parking on Hollister | | | | | | | | | |
|-----------------------|-------------------|-------------------|-------------|--|----------------|-------------------|------------|---|----------------|----------|-----------|----------------|---|--------------------------|--------------------|------------|----------------|---|--------------------------|----------|------------|----------------|----|----|-----|----|---|
| | | | | Spaces without Restrictions | 1 Hour Parking | Disabled /Loading | Total | Spaces without Restrictions | 1 Hour Parking | Disabled | Total | Spaces Removed | Spaces without Restrictions | 90-Minute Parking Spaces | 15-Minute /Loading | Total | Spaces Removed | Spaces without Restrictions | 90-Minute Parking Spaces | Loading | Total | Spaces Removed | | | | | |
| Dawson Street | Pine Avenue | Rutherford Street | North | 12 | 0 | | 12 | No change in parking spaces from existing conditions. | | | | | No change in parking spaces from existing conditions. | | | | | No change in parking spaces from existing conditions. | | | | | | | | | |
| Dawson Street | Pine Avenue | Rutherford Street | South | 13 | 0 | | 13 | | | | | | | | | | | | | | | | | | | | |
| Gaviota Street | Orange Avenue | Magnolia Avenue | North | 20 | 0 | | 20 | | | | | | | | | | | | | | | | | | | | |
| Gaviota Street | Orange Avenue | Magnolia Avenue | South | 11 | 0 | | 11 | | | | | | | | | | | | | | | | | | | | |
| Gaviota Street | Magnolia Avenue | Pine Avenue | North | 8 | 0 | | 8 | | | | | | | | | | | | | | | | | | | | |
| Gaviota Street | Magnolia Avenue | Pine Avenue | South | 11 | 0 | | 11 | | | | | | | | | | | | | | | | | | | | |
| Hollister Avenue | Fairview Avenue | Orange Avenue | North | 0 | 0 | | 0 | | | | | | | | | | | | | | | | | | | | |
| Hollister Avenue | Fairview Avenue | Orange Avenue | South | 0 | 0 | | 0 | | | | | | | | | | | | | | | | | | | | |
| Hollister Avenue | Kinman Avenue | Kellogg Avenue | North | 0 | 0 | | 0 | | | | | | | | | | | | | | | | | | | | |
| Hollister Avenue | Kinman Avenue | Kellogg Avenue | South | 0 | 0 | | 0 | | | | | | | | | | | | | | | | | | | | |
| Hollister Avenue | Magnolia Avenue | Nectarine Avenue | North | 0 | 12 | | 12 | 0 | 6 | | 6 | 6 | 0 | 4 | 3/0 | 7 | 5 | 0 | 3 | 3/0 | 6 | 6 | | | | | |
| Hollister Avenue | Magnolia Avenue | Pine Avenue | South | 0 | 5 | | 5 | 0 | 5 | | 5 | 0 | 0 | 5 | | 5 | 0 | 0 | 5 | | 5 | 0 | | | | | |
| Hollister Avenue | Nectarine Avenue | Tecolote Avenue | North | 0 | 10 | | 10 | 0 | 7 | | 7 | 3 | 0 | 7 | | 7 | 3 | 0 | 7 | | 7 | 3 | | | | | |
| Hollister Avenue | Orange Avenue | Magnolia Avenue | North | 0 | 7 | | 7 | 0 | 3 | | 3 | 4 | 0 | 4 | | 4 | 3 | 0 | 3 | | 3 | 4 | | | | | |
| Hollister Avenue | Orange Avenue | Magnolia Avenue | South | 0 | 12 | | 12 | 0 | 5 | | 5 | 7 | 0 | 5 | | 5 | 7 | 0 | 5 | | 5 | 7 | | | | | |
| Hollister Avenue | Pine Avenue | Rutherford Street | South | 0 | 5 | | 5 | 0 | 4 | | 4 | 1 | 0 | 5 | | 5 | 0 | 0 | 4 | | 4 | 1 | | | | | |
| Hollister Avenue | Rutherford Street | Kinman Avenue | North | 12 | 1 | | 13 | 11 | 1 | | 12 | 1 | 0 | 13 | | 13 | 0 | 0 | 12 | | 12 | 1 | | | | | |
| Hollister Avenue | Rutherford Street | Kinman Avenue | South | 0 | 6 | | 6 | 0 | 4 | | 4 | 2 | 0 | 6 | | 6 | 0 | 0 | 4 | | 4 | 2 | | | | | |
| Hollister Avenue | Tecolote Avenue | Rutherford Street | North | 0 | 4 | | 4 | 0 | 0 | | 0 | 4 | 0 | 0 | | 0 | 4 | 0 | 0 | | 0 | 4 | | | | | |
| Kinman Avenue | Hollister Avenue | Gato Avenue | West | 11 | 0 | | 11 | No change in parking spaces from existing conditions. | | | | | 9 | 2 | | 11 | 0 | 9 | 2 | | 11 | 0 | | | | | |
| Kinman Avenue | Hollister Avenue | Gato Avenue | East | 11 | 0 | | 11 | | | | | | 7 | 4 | | 11 | 0 | 7 | 4 | | 11 | 0 | 7 | 4 | | 11 | 0 |
| Magnolia Avenue | Hollister Avenue | Gaviota Street | West | 10 | 0 | | 10 | | | | | | 0 | 9 | 0/1 | 10 | 0 | 0 | 9 | 0/1 | 10 | 0 | 0 | 9 | 0/1 | 10 | 0 |
| Magnolia Avenue | Hollister Avenue | Gaviota Street | East | 9 | 0 | | 9 | | | | | | 0 | 8 | | 8 | 1 | 0 | 8 | | 8 | 1 | 0 | 8 | | 8 | 1 |
| Magnolia Avenue | Gaviota Street | Carson Street | West | 7 | 0 | | 7 | | | | | | 7 | 0 | | 7 | 0 | 7 | 0 | | 7 | 0 | 7 | 0 | | 7 | 0 |
| Magnolia Avenue | Hollister Avenue | Mandarin Drive | West | 14 | 0 | | 14 | 11 | 0 | | 11 | 1 | 11 | 0 | | 11 | 1 | 11 | 0 | | 11 | 1 | | | | | |
| Magnolia Avenue | Hollister Avenue | Mandarin Drive | East | 16 | 0 | | 16 | No change in parking spaces from existing conditions. | | | | | 9 | 5 | | 14 | 0 | 9 | 5 | | 14 | 0 | | | | | |
| Magnolia Avenue | Hollister Avenue | Mandarin Drive | East | 16 | 0 | | 16 | | | | | | 11 | 5 | | 16 | 0 | 11 | 5 | | 16 | 0 | 11 | 5 | | 16 | 0 |
| Nectarine Avenue | Hollister Avenue | Mandarin Drive | West | 14 | 0 | | 14 | | | | | | 10 | 4 | | 14 | 0 | 10 | 4 | | 14 | 0 | 10 | 4 | | 14 | 0 |
| Nectarine Avenue | Hollister Avenue | Mandarin Drive | East | 17 | 0 | | 17 | | | | | | 13 | 4 | | 17 | 0 | 13 | 4 | | 17 | 0 | 13 | 4 | | 17 | 0 |
| Orange Avenue | Gaviota Street | Carson Street | West | 11 | 0 | | 11 | | | | | | 11 | 0 | | 11 | 0 | 11 | 0 | | 11 | 0 | 11 | 0 | | 11 | 0 |
| Orange Avenue | Hollister Avenue | Gaviota Street | West | 11 | 0 | | 11 | 7 | 0 | | 7 | 1 | 7 | 0 | | 7 | 1 | 7 | 0 | | 7 | 1 | | | | | |
| Orange Avenue | Hollister Avenue | Gaviota Street | East | 11 | 0 | | 11 | 11 | 0 | | 11 | 0 | 0 | 11 | | 11 | 0 | 0 | 11 | | 11 | 0 | | | | | |
| Orange Avenue | Hollister Avenue | Gaviota Street | East | 11 | 0 | | 11 | 10 | 0 | | 10 | 1 | 0 | 10 | | 10 | 1 | 0 | 10 | | 10 | 1 | | | | | |
| Orange Avenue | Hollister Avenue | Mandarin Drive | West | 16 | 0 | | 16 | No change in parking spaces from existing conditions. | | | | | 11 | 5 | | 16 | 0 | 11 | 5 | | 16 | 0 | | | | | |
| Orange Avenue | Hollister Avenue | Mandarin Drive | East | 15 | 0 | | 15 | | | | | | 12 | 3 | | 15 | 0 | 12 | 3 | | 15 | 0 | 12 | 3 | | 15 | 0 |
| Pine Avenue | Gaviota Street | Carson Street | West | 6 | 0 | | 6 | | | | | | 6 | 0 | | 6 | 0 | 6 | 0 | | 6 | 0 | 6 | 0 | | 6 | 0 |
| Pine Avenue | Gaviota Street | Dawson Street | East | 5 | 0 | 1/0 | 6 | | | | | | 6 | 0 | | 6 | 0 | 6 | 0 | | 6 | 0 | 6 | 0 | | 6 | 0 |
| Pine Avenue | Hollister Avenue | Gaviota Street | West | 6 | 0 | | 6 | | | | | | 0 | 6 | | 6 | 0 | 0 | 6 | | 6 | 0 | 0 | 6 | | 6 | 0 |
| Pine Avenue | Hollister Avenue | Gaviota Street | East | 5 | 0 | | 5 | | | | | | 0 | 5 | | 5 | 0 | 0 | 5 | | 5 | 0 | 0 | 5 | | 5 | 0 |
| Rutherford Street | Hollister Avenue | Dawson Street | West | 6 | 0 | 0/4 | 10 | | | | | | 0 | 6 | 0/4 | 10 | 0 | 0 | 6 | 0/4 | 10 | 0 | 0 | 6 | 0/4 | 10 | 0 |
| Rutherford Street | Hollister Avenue | Dawson Street | East | 14 | 0 | | 14 | | | | | | 0 | 14 | | 14 | 0 | 0 | 14 | | 14 | 0 | 0 | 14 | | 14 | 0 |
| Tecolote Avenue | Hollister Avenue | Gato Avenue | West | 7 | 0 | 0/3 | 10 | | | | | | 7 | 0 | 0/3 | 10 | 0 | 7 | 0 | 0/3 | 10 | 0 | 7 | 0 | 0/3 | 10 | 0 |
| Tecolote Avenue | Hollister Avenue | Gato Avenue | East | 7 | 0 | | 7 | | | | | | 3 | 4 | | 7 | 0 | 3 | 4 | | 7 | 0 | 3 | 4 | | 7 | 0 |
| Hollister Avenue ONLY | | | | 12 | 62 | 0 | 74 | 11 | 35 | 0 | 46 | 28 | 0 | 49 | 0 | 52 | 22 | 0 | 43 | 0 | 46 | 28 | | | | | |
| All Other | | | | 324 | 0 | 0 | 332 | 39 | 0 | 1 | 39 | 3 | 140 | 105 | 0 | 253 | 4 | 140 | 105 | 0 | 253 | 4 | | | | | |
| TOTAL | | | | 336 | 62 | 0 | 406 | 50 | 35 | 1 | 85 | 31 | 140 | 154 | 0 | 305 | 26 | 140 | 148 | 0 | 299 | 32 | | | | | |

ATTACHMENT 3

Old Town Parking Maps – Options 1-4

Option 1: Existing Parking Restrictions



Legend

- Bus Stop
- Public Parking
- Fire Hydrants

Parking Restriction Type

- 1-Hr Parking
- Disabled
- Loading Zone
- No Restriction
- No Stopping Any Time

0 100 200 400 Feet

CITY OF GOLETA

REVIEWED BY:

Charles W. Ebel

SIGNATURE

1/18/19

Date

Document Path: Y:\Old_Town_Parking_Restrictions\Old_Town_Parking_Restrictions_option_1_12-28-18.mxd

Option 2: Public Safety & Emergency Preparedness – Safety Enhancement Option



Legend

- Bus Stop
- Public Parking
- Fire Hydrants

Parking Restriction Type

- 1-Hr Parking
- Disabled
- Loading Zone
- No Restriction
- No Stopping Any Time

0 100 200 400 Feet

CITY OF GOLETA

REVIEWED BY:

Charles W. Ebel

SIGNATURE

1/18/19

Date

Option 3: Public Safety & Emergency Preparedness Standing Committee Recommendation



Document Path: Y:\Old_Town_Parking_Restrictions\Old_Town_Parking_Restrictions_option_3_12-28-18.mxd

Legend

- Bus Stop
- Public Parking
- Fire Hydrants

Parking Restriction Type

- 15-Minute Parking
- 90 Minute Parking
- Loading Zone
- No Restriction
- No Stopping Any Time

0 100 200 400 Feet

CITY OF GOLETA

REVIEWED BY:

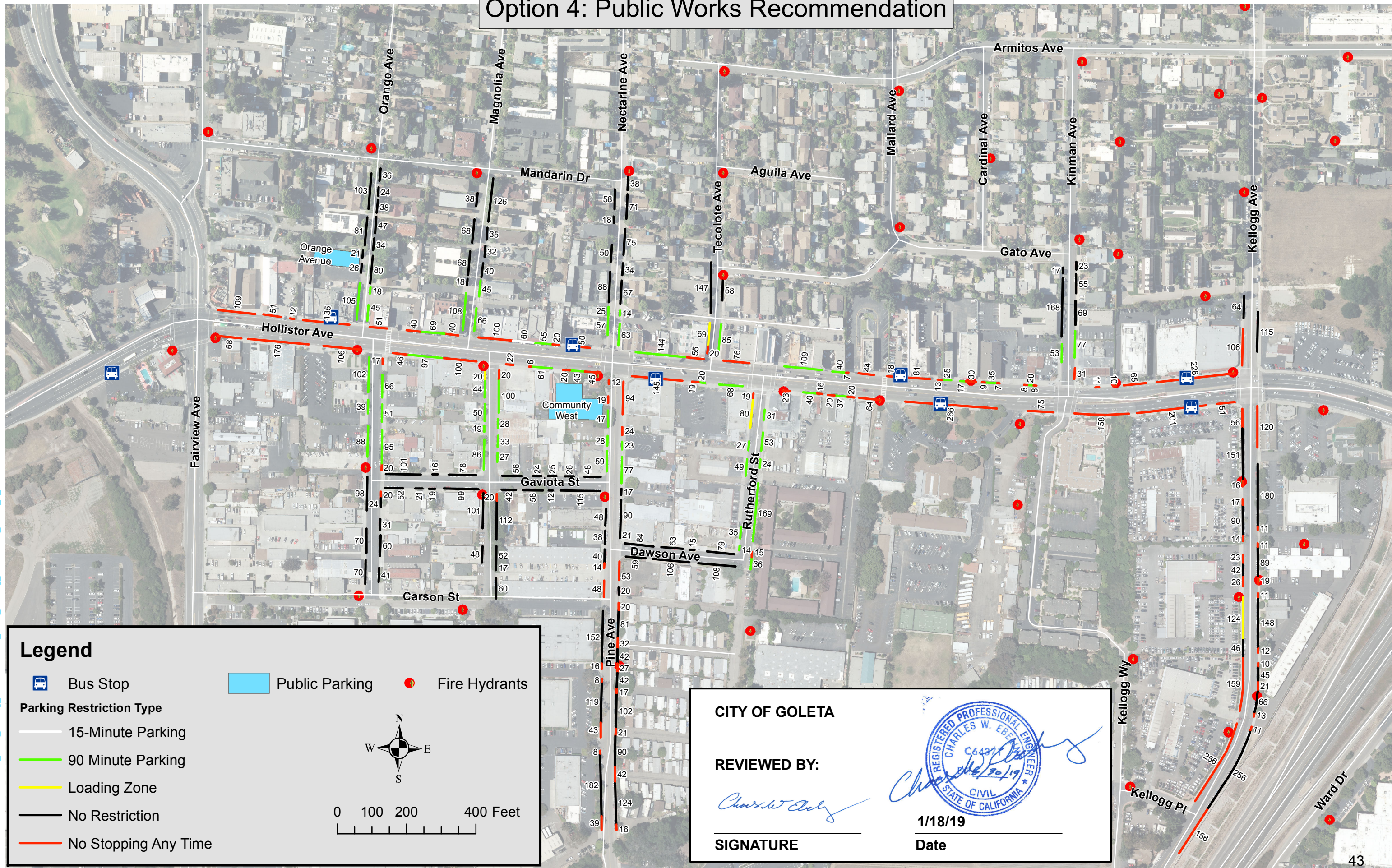
SIGNATURE

1/18/19

Date

Option 4: Public Works Recommendation

Document Path: Y:\Old_Town_Parking_Restrictions\Old_Town_Parking_Restrictions_option_4_01-22-19.mxd



Legend

- Bus Stop
- Public Parking
- Fire Hydrants

Parking Restriction Type

- 15-Minute Parking
- 90 Minute Parking
- Loading Zone
- No Restriction
- No Stopping Any Time

0 100 200 400 Feet

CITY OF GOLETA

REVIEWED BY:

SIGNATURE

1/18/19

Date

ATTACHMENT 4

Resolution No. 19-__ entitled, "A Resolution of the City Council of the City of Goleta, California, Establishing Parking Restrictions for No Parking, 15 Minute Parking, 90 Minute Parking, and a Loading Zone in Old Town Goleta."

RESOLUTION NO. 19-__

A RESOLUTION OF THE CITY COUNCIL OF THE CITY OF GOLETA, CALIFORNIA, ESTABLISHING PARKING RESTRICTIONS ON SPECIFIED STREETS AND STREET SEGMENTS IN OLD TOWN GOLETA

THE CITY COUNCIL OF THE CITY OF GOLETA DOES HEREBY RESOLVE AS FOLLOWS:

SECTION 1. Goleta Municipal Code Sections 10.01.120 and 10.01.130 authorize the City Council by resolution to designate time-limited and no parking zones in the City.

SECTION 2. In accordance with the authority set forth in Goleta Municipal Code Sections 10.01.120 and 10.01.130, parking is restricted and/or prohibited as set forth in Exhibit A attached hereto and incorporated herein by reference as regards those streets and street segments enumerated in Exhibit A.

SECTION 3. The restrictions set forth in Exhibit A will take effect upon the installation of appropriate signs and curb markings identifying the restrictions. The Public Works Director is hereby directed to provide for the installation and maintenance of appropriate signs and/or curb markings at the locations identified in Exhibit A.

SECTION 4. The City Clerk shall certify to the passage and adoption of this resolution and enter it into the book of original resolutions.

PASSED, APPROVED AND ADOPTED this 19th day of February 2019.

PAULA PEROTTE
MAYOR

ATTEST:

APPROVED AS TO FORM:

DEBORAH S. LOPEZ
CITY CLERK

MICHAEL JENKINS
CITY ATTORNEY

STATE OF CALIFORNIA)
COUNTY OF SANTA BARBARA) ss.
CITY OF GOLETA)

I, DEBORAH S. LOPEZ, City Clerk of the City of Goleta, California, DO HEREBY CERTIFY that the foregoing Resolution No. 19-__ was duly adopted by the City Council of the City of Goleta at a regular meeting held on the 19th day of February, 2019 by the following vote of the Council:

AYES:

NOES:

ABSENT:

ABSTENTIONS:

(SEAL)

DEBORAH S. LOPEZ
CITY CLERK

Exhibit A
Parking Restrictions

| Type | Street | Side | From | To | Length |
|--------|-------------------|-------|---------------------------------------|--|--------|
| 90 Min | Hollister Avenue | North | 90' w/o the CL of Kinman Avenue | 124' w/o CL of Kinman Avenue | 36 |
| 90 Min | Hollister Avenue | North | 205' w/o the CL of Kinman Avenue | 240' w/o CL of Kinman Avenue | 35 |
| 90 Min | Hollister Avenue | North | 300' w/o the CL of Kinman Avenue | 317' w/o CL of Kinman Avenue | 17 |
| 90 Min | Hollister Avenue | North | 340' w/o the CL of Kinman Avenue | 365' w/o CL of Kinman Avenue | 25 |
| 90 Min | Hollister Avenue | North | 200' e/o CL of Rutherford Street | 247' e/o CL of Rutherford Street | 47 |
| 90 Min | Hollister Avenue | North | 60' e/o CL of Rutherford Street | 169' e/o CL of Rutherford Street | 109 |
| 90 Min | Hollister Avenue | South | 120' e/o CL of Magnolia Avenue | 181' e/o CL of Magnolia Avenue | 61 |
| 90 Min | Hollister Avenue | South | 90' w/o CL of Pine Avenue | 133' w/o CL of Pine Avenue | 43 |
| 90 Min | Hollister Avenue | South | 220' e/o CL of Pine Avenue | 259' e/o CL of Pine Avenue | 39 |
| 90 Min | Hollister Avenue | South | 60' w/o CL of Rutherford Street | 128' w/o CL of Rutherford Street | 68 |
| 90 Min | Hollister Avenue | South | 120' e/o CL of Rutherford Street | 176' e/o CL of Rutherford Street | 56 |
| 90 Min | Hollister Avenue | South | 195' e/o CL of Rutherford Street | 260' e/o CL of Rutherford Street | 65 |
| 90 Min | Orange Avenue | West | 50' s/o CL of Hollister Avenue | CL of Gaviota Street | 229* |
| 90 Min | Orange Avenue | East | 50' s/o CL of Hollister Avenue | CL of Gaviota Street | 212* |
| 90 Min | Magnolia Avenue | West | 95' s/o CL of Hollister Avenue | CL of Gaviota Street | 187* |
| 90 Min | Magnolia Avenue | East | 70' s/o CL of Hollister Avenue | 320' s/o CL of Hollister Avenue | 188* |
| 90 Min | Pine Avenue | East | 225' s/o CL of Hollister Avenue | 345' s/o CL of Hollister Avenue | 100* |
| 90 Min | Pine Avenue | West | 140' s/o CL of Hollister Avenue | 315' s/o CL of Hollister Avenue | 134* |
| 90 Min | Rutherford Street | West | 190' s/o CL of Hollister Avenue | 510' s/o CL of Hollister Avenue | 125* |
| 90 Min | Rutherford Street | East | 100' s/o CL of Hollister Avenue | 560' s/o CL of Hollister Avenue | 328* |
| 90 Min | Orange Avenue | West | 50' n/o CL of Hollister Avenue | 155' n/o CL of Hollister Avenue | 105 |
| 90 Min | Orange Avenue | East | 50' n/o CL of Hollister Avenue | 150' n/o CL of Hollister Avenue | 63* |
| 90 Min | Magnolia Avenue | East | 50' n/o CL of Hollister Avenue | 200' n/o CL of Hollister Avenue | 111* |
| 90 Min | Magnolia Avenue | West | 50' n/o CL of Hollister Avenue | 205' n/o CL of Hollister Avenue | 105 |
| 90 Min | Nectarine Avenue | East | 50' n/o CL of Hollister Avenue | 150' n/o CL of Hollister Avenue | 77* |
| 90 Min | Nectarine Avenue | West | 50' n/o CL of Hollister Avenue | 150' n/o CL of Hollister Avenue | 82* |
| 90 Min | Tecolote Avenue | East | 50' n/o CL of Hollister Avenue | 135' n/o CL of Hollister Avenue | 85 |
| 90 Min | Kinman Avenue | East | 120' n/o CL of Hollister Avenue | 197' n/o CL of Hollister Avenue | 77 |
| 90 Min | Kinman Avenue | West | 100' n/o CL of Hollister Avenue | 153' n/o CL of Hollister Avenue | 53 |
| 90 Min | Hollister Avenue | South | 100' e/o CL of Orange Avenue | 197' e/o CL of Orange Avenue | 97 |
| 90 Min | Hollister Avenue | North | 150' w/o CL of Nectarine Avenue | 217' w/o CL of Nectarine Avenue | 69 |
| 90 Min | Hollister Avenue | North | 80' w/o CL of Magnolia Avenue (north) | 179' w/o CL of Magnolia Avenue (north) | 99 |
| 90 Min | Hollister Avenue | North | 75' w/o CL of Tecolote Avenue | 225' w/o CL of Tecolote Avenue | 144 |

Exhibit A
Parking Restrictions

| Type | Street | Side | From | To | Length |
|--------------|------------------|-------------|------------------------------------|------------------------------------|---------------|
| 15 Min | Hollister Avenue | North | 126' e/o the CL of Magnolia Avenue | 192' e/o the CL of Magnolia Avenue | 66 |
| Loading Zone | Magnolia Avenue | West | 65' s/o the CL of Hollister Avenue | 95' s/o the CL of Hollister Avenue | 30 |
| No Parking | Hollister Avenue | North | CL Fairview Avenue | CL Orange Avenue (south) | 307* |
| No Parking | Hollister Avenue | North | 30' e/o CL of Orange Avenue | 81' e/o CL of Orange Avenue | 51 |
| No Parking | Hollister Avenue | North | 30' w/o CL of Magnolia Avenue | 80' w/o of CL of Magnolia Avenue | 50 |
| No Parking | Hollister Avenue | North | 30' e/o CL of Magnolia Avenue | 130' e/o of CL of Magnolia Avenue | 100 |
| No Parking | Hollister Avenue | North | 65' w/o CL of Nectarine Avenue | 111' w/o CL of Nectarine Avenue | 50 |
| No Parking | Hollister Avenue | North | 85' w/o CL of Tecolote Avenue | 30' w/o CL of Tecolote Avenue | 55 |
| No Parking | Hollister Avenue | North | 30' e/o CL of Tecolote Avenue | 106' e/o CL of Tecolote Avenue | 76 |
| No Parking | Hollister Avenue | North | 430' e/o CL of Tecolote Avenue | 474' e/o CL of Tecolote Avenue | 44 |
| No Parking | Hollister Avenue | North | 536' w/o CL of Kinman Avenue | 518' w/o CL of Kinman Avenue | 18 |
| No Parking | Hollister Avenue | North | 482' w/o CL of Kinman Avenue | 401' w/o CL of Kinman Avenue | 81 |
| No Parking | Hollister Avenue | North | 378' w/o CL of Kinman Avenue | 365' w/o CL of Kinman Avenue | 13 |
| No Parking | Hollister Avenue | North | 295' w/o CL of Kinman Avenue | 265' w/o CL of Kinman Avenue | 30 |
| No Parking | Hollister Avenue | North | 250' w/o CL of Kinman Avenue | 241' w/o CL of Kinman Avenue | 9 |
| No Parking | Hollister Avenue | North | 203' w/o CL of Kinman Avenue | 196' w/o CL of Kinman Avenue | 7 |
| No Parking | Hollister Avenue | North | CL of Kinman Avenue | CL of Kellogg Avenue | 314* |
| No Parking | Hollister Avenue | South | CL of Kinman Avenue | CL of Kellogg Avenue | 410* |
| No Parking | Hollister Avenue | South | CL Kinman Avenue | 607' w/o CL of Kinman Avenue | 405* |
| No Parking | Hollister Avenue | South | 65' e/o CL of Rutherford Street | 88' e/o CL of Rutherford Street | 23 |
| No Parking | Hollister Avenue | South | 45' e/o CL of Pine Avenue | 190' e/o CL of Pine Avenue | 145 |
| No Parking | Hollister Avenue | South | 90' w/o CL of Pine Avenue | 45' w/o CL of Pine Avenue | 45 |
| No Parking | Hollister Avenue | South | 155' w/o CL of Pine Avenue | 135' w/o CL of Pine Avenue | 20 |
| No Parking | Hollister Avenue | South | 38' e/o CL of Magnolia Avenue | 60' e/o CL of Magnolia Avenue | 22 |
| No Parking | Hollister Avenue | South | 106' e/o CL of Magnolia Avenue | 112' e/o CL of Magnolia Avenue | 6 |
| No Parking | Hollister Avenue | South | 40' w/o CL of Magnolia Avenue | 140' w/o CL of Magnolia Avenue | 100 |
| No Parking | Hollister Avenue | South | 45' e/o CL of Orange Avenue | 91' e/o CL of Orange Avenue | 46 |
| No Parking | Hollister Avenue | South | CL Fairview Avenue | CL Orange Avenue | 350* |
| No Parking | Orange Avenue | East | 50 s/o CL Hollister Avenue | 67 s/o CL Hollister Avenue | 17 |
| No Parking | Orange Avenue | East | 25 n/o CL Gaviota Street | 45 n/o CL Gaviota Street | 20 |
| No Parking | Orange Avenue | East | 25 s/o CL Gaviota Street | 45 s/o CL Gaviota Street | 20 |
| No Parking | Magnolia Avenue | East | 50 s/o CL Hollister Avenue | 70 s/o CL Hollister Avenue | 20 |
| No Parking | Magnolia Avenue | East | 25 s/o CL Gaviota Street | 45 s/o CL Gaviota Street | 20 |

Exhibit A Parking Restrictions

| Type | Street | Side | From | To | Length |
|------------|-------------------|------|------------------------------|-----------------------------|--------|
| No Parking | Pine Avenue | West | 50 s/o CL Hollister Avenue | 120 s/o CL Hollister Avenue | 31* |
| No Parking | Pine Avenue | East | 50 s/o CL Hollister Avenue | 205 s/o CL Hollister Avenue | 118* |
| No Parking | Pine Avenue | West | 25 n/o CL Carson Street | 117 n/o CL Carson Street | 52* |
| No Parking | Pine Avenue | West | 177 s/o CL Carson Street | 218 s/o CL Carson Street | 24* |
| No Parking | Pine Avenue | West | 337 s/o CL Carson Street | 435 s/o CL Carson Street | 43* |
| No Parking | Pine Avenue | West | 607 s/o CL Carson Street | 646 s/o CL Carson Street | 39* |
| No Parking | Pine Avenue | East | 780 s/o CL Dawson Avenue | 796 s/o CL Dawson Avenue | 16 |
| No Parking | Pine Avenue | East | 25 s/o CL Dawson Avenue | 78 s/o CL Dawson Avenue | 53 |
| No Parking | Pine Avenue | East | 150 s/o CL Dawson Avenue | 170 s/o CL Dawson Avenue | 20 |
| No Parking | Pine Avenue | East | 260 s/o CL Dawson Avenue | 292 s/o CL Dawson Avenue | 32 |
| No Parking | Pine Avenue | East | 400 s/o CL Dawson Avenue | 417 s/o CL Dawson Avenue | 17 |
| No Parking | Pine Avenue | East | 515 s/o CL Dawson Avenue | 536 s/o CL Dawson Avenue | 21 |
| No Parking | Pine Avenue | East | 640 s/o CL Dawson Avenue | 682 s/o CL Dawson Avenue | 42 |
| No Parking | Rutherford Street | East | 25 n/o CL Dawson Avenue | 40 s/o CL Hollister | 15 |
| No Parking | Kellogg Avenue | West | 50 s/o CL Hollister Avenue | 106 s/o CL Hollister | 56 |
| No Parking | Kellogg Avenue | East | 50 s/o CL Hollister Avenue | 170 s/o CL Hollister | 120 |
| No Parking | Kellogg Avenue | West | 50 n/o CL Hollister Avenue | 156 n/o CL Hollister | 106 |
| No Parking | Kinman Avenue | East | 50 n/o CL Hollister Avenue | 81 n/o CL Hollister | 31 |
| No Parking | Tecolote Avenue | West | 50 n/o CL Hollister Avenue | 70 n/o CL Hollister | 20 |
| No Parking | Kellogg Avenue | West | 275 s/o CL Hollister Avenue | 291 s/o CL Hollister | 16 |
| No Parking | Kellogg Avenue | West | 440 s/o CL Hollister Avenue | 500 s/o CL Hollister | 37* |
| No Parking | Kellogg Avenue | West | 542 s/o CL Hollister Avenue | 568 s/o CL Hollister | 26 |
| No Parking | Kellogg Avenue | West | 770 s/o CL Hollister Avenue | 1185 s/o CL Hollister | 415* |
| No Parking | Kellogg Avenue | East | 400 s/o CL Hollister Avenue | 452 s/o CL Hollister | 22* |
| No Parking | Kellogg Avenue | East | 560 s/o CL Hollister Avenue | 610 s/o CL Hollister | 30* |
| No Parking | Kellogg Avenue | East | 762 s/o CL Hollister Avenue | 810 s/o CL Hollister | 22* |
| No Parking | Kellogg Avenue | East | 928 s/o CL Hollister Avenue | 988 s/o CL Hollister | 24* |
| No Parking | Kellogg Avenue | East | 1244 s/o CL Hollister Avenue | 1400 s/o CL Hollister | 156 |

* Lengths do not include driveways or other restrictions within the same reach.

Legend:

CL - Centerline

w/o - north, south, east, or west of

ATTACHMENT 5

Business Owner Request for Two, 15 Minute, Parking Spaces for Magnolia Avenue

From: Anne Pazier
To: [Jaime Valdez](#)
Subject: 15 min parking
Date: Wednesday, September 12, 2018 10:25:04 AM

Hi Jaime-

I believe a couple of 15 minute parking spots on Magnolia, would benefit several of the businesses in our area who have customers running in to pick things up. Thank you for considering!

Best,

Anne Pazier

Sent from my iPhone

Anne Pazier

Santa Barbara Gift Baskets

230 Magnolia Ave

Goleta, CA 93117

Santabarbaragiftbaskets@hotmail.com

ATTACHMENT 6

Ordinance No. 19-__ entitled “An Ordinance of the City of Goleta, California Amending Chapter 10.01 (Motor Vehicles and Traffic) of the Goleta Municipal Code to Require Vehicles Parked in Restricted Parking Areas to not Re-Park within a Distance of 300 Feet.”

ORDINANCE NO. 19-__

**AN ORDINANCE OF THE CITY OF GOLETA,
CALIFORNIA AMENDING CHAPTER 10.01 (MOTOR
VEHICLES AND TRAFFIC) OF TITLE 10 (VEHICLES
AND TRAFFIC) OF THE GOLETA MUNICIPAL CODE
TO REQUIRE VEHICLES PARKED IN RESTRICTED
PARKING AREAS TO NOT RE-PARK WITHIN A
DISTANCE OF 300 FEET**

SECTION 1. CODE AMENDMENT

Chapter 10.01 of Title 10 of the Goleta Municipal Code is hereby amended:

Section 10.01.300 is added:

10.01.300 Re-Parking of Vehicles in Restricted Parking Areas

If a vehicle is parked in an area where the City has posted signs restricting parking to a specific time interval or maximum number of hours, such vehicle shall not be re-parked within a distance of 300 feet of the place initially parked within a period of four hours thereafter. Vehicles used for vending or peddling purposes shall also comply with provisions in this section.

SECTION 2: *Severability.* Should any provision, section, paragraph, sentence or word of this Ordinance be rendered or declared invalid by a court of competent jurisdiction or by reason of any preemptive legislation, the remaining provisions, sections, paragraphs, sentences or words of this Ordinance shall remain in full force and effect.

SECTION 3: *Continued Effectiveness.* Repeal of any provision of the Goleta Municipal Code will not affect any penalty, forfeiture, or liability incurred before, or preclude prosecution and imposition of penalties for any violation occurring before, this Ordinance's effective date. Any such repealed part will remain in full force and effect for sustaining action or prosecuting violations occurring before the effective date of this Ordinance.

SECTION 4: *Certification.* The City Clerk is directed to certify the passage and adoption of this Ordinance; cause it to be entered into the City of Goleta's book of original ordinances; make a note of the passage and adoption in the records of this meeting; and, within fifteen (15) days after the passage and adoption of this Ordinance, cause it to be published or posted in accordance with California law.

INTRODUCED ON the ___ day of _____, 2019.

PASSED, APPROVED, AND ADOPTED this _____ day of _____ 2019.

PAULA PEROTTE, MAYOR

ATTEST:

APPROVED AS TO FORM:

DEBORAH S. LOPEZ
CITY CLERK

MICHAEL JENKINS
CITY ATTORNEY

STATE OF CALIFORNIA)
COUNTY OF SANTA BARBARA) ss.
CITY OF GOLETA)

I, Deborah S. Lopez, City Clerk of the City of Goleta, California, do hereby certify that the foregoing Ordinance No. 19-__ was introduced on _____, and adopted at a regular meeting of the City Council of the City of Goleta, California, held on the _____, by the following roll-call vote, to wit:

AYES:

NOES:

ABSENT:

ABSTENTIONS:

(SEAL)

DEBORAH S. LOPEZ
CITY CLERK